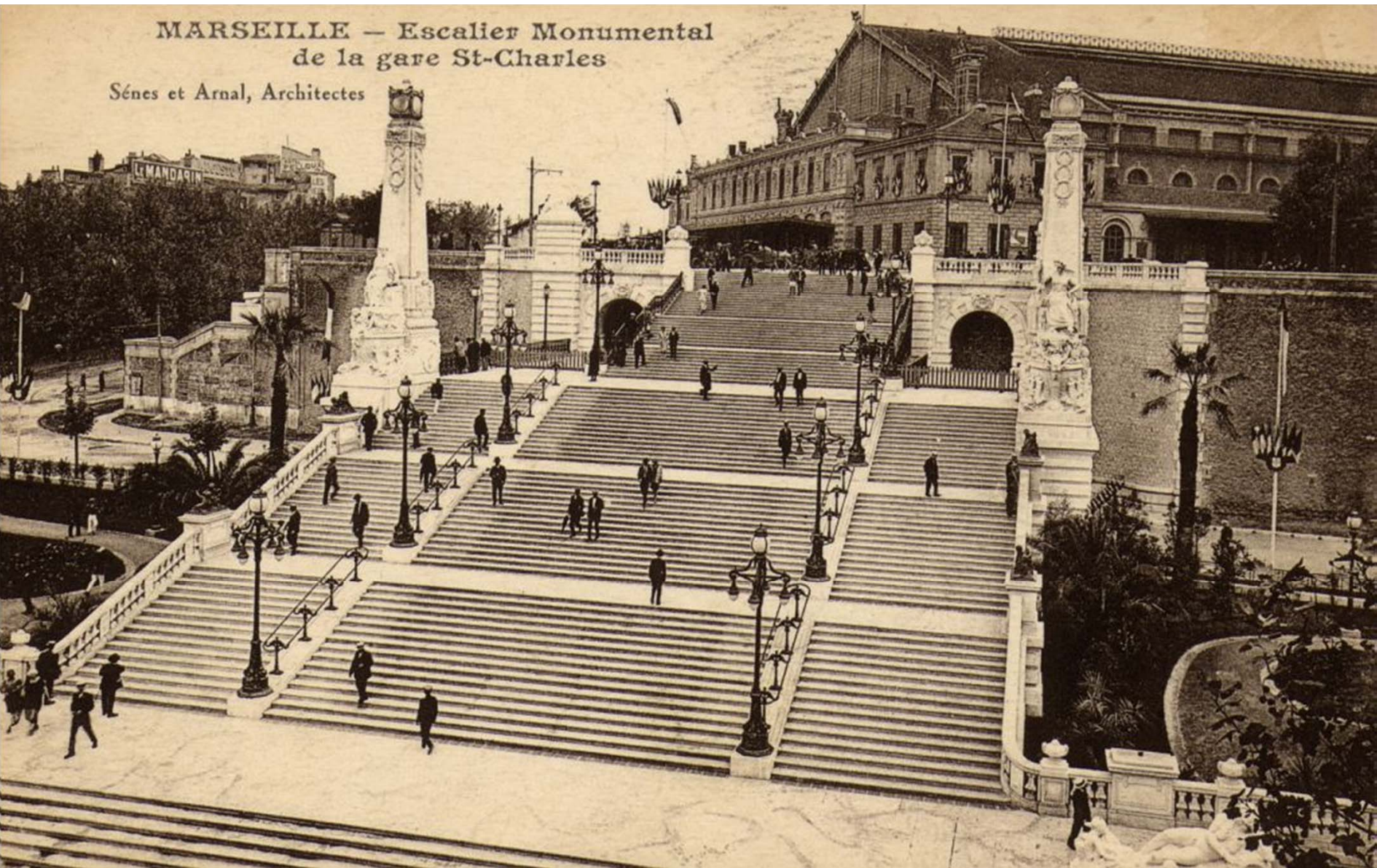




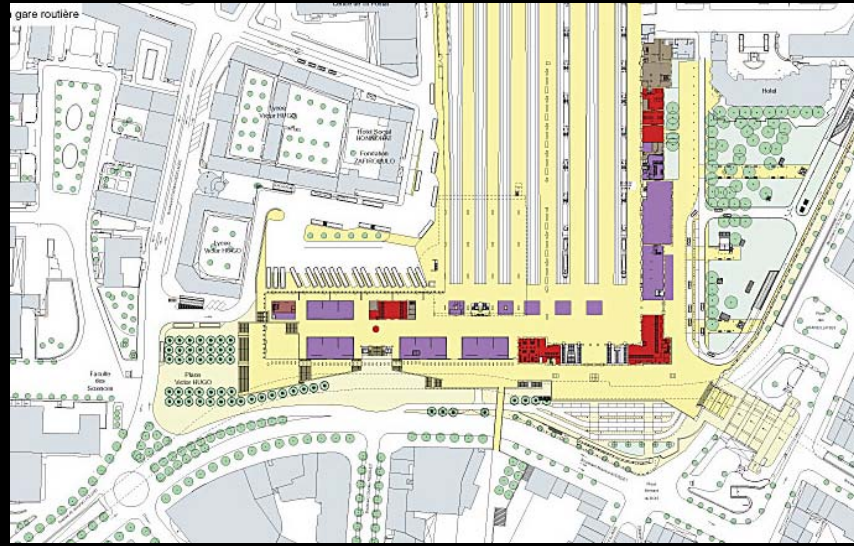
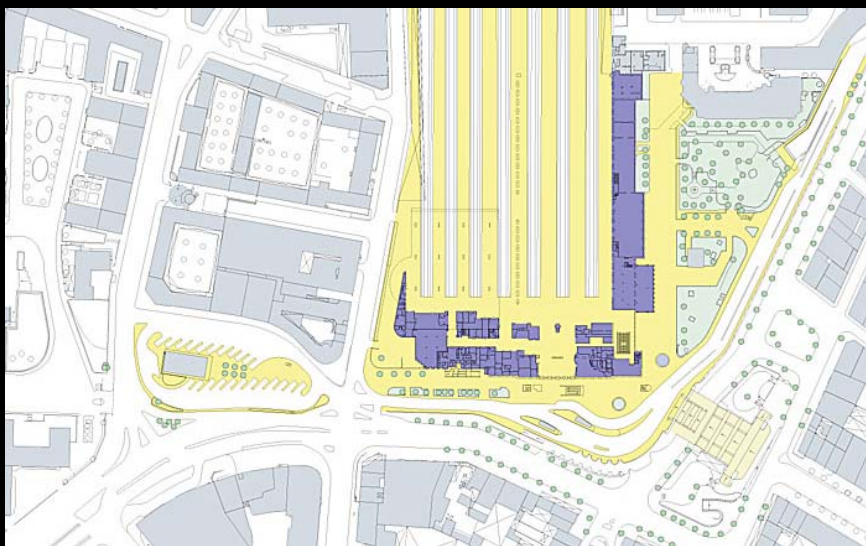
MARSEILLE — Escalier Monumental
de la gare St-Charles

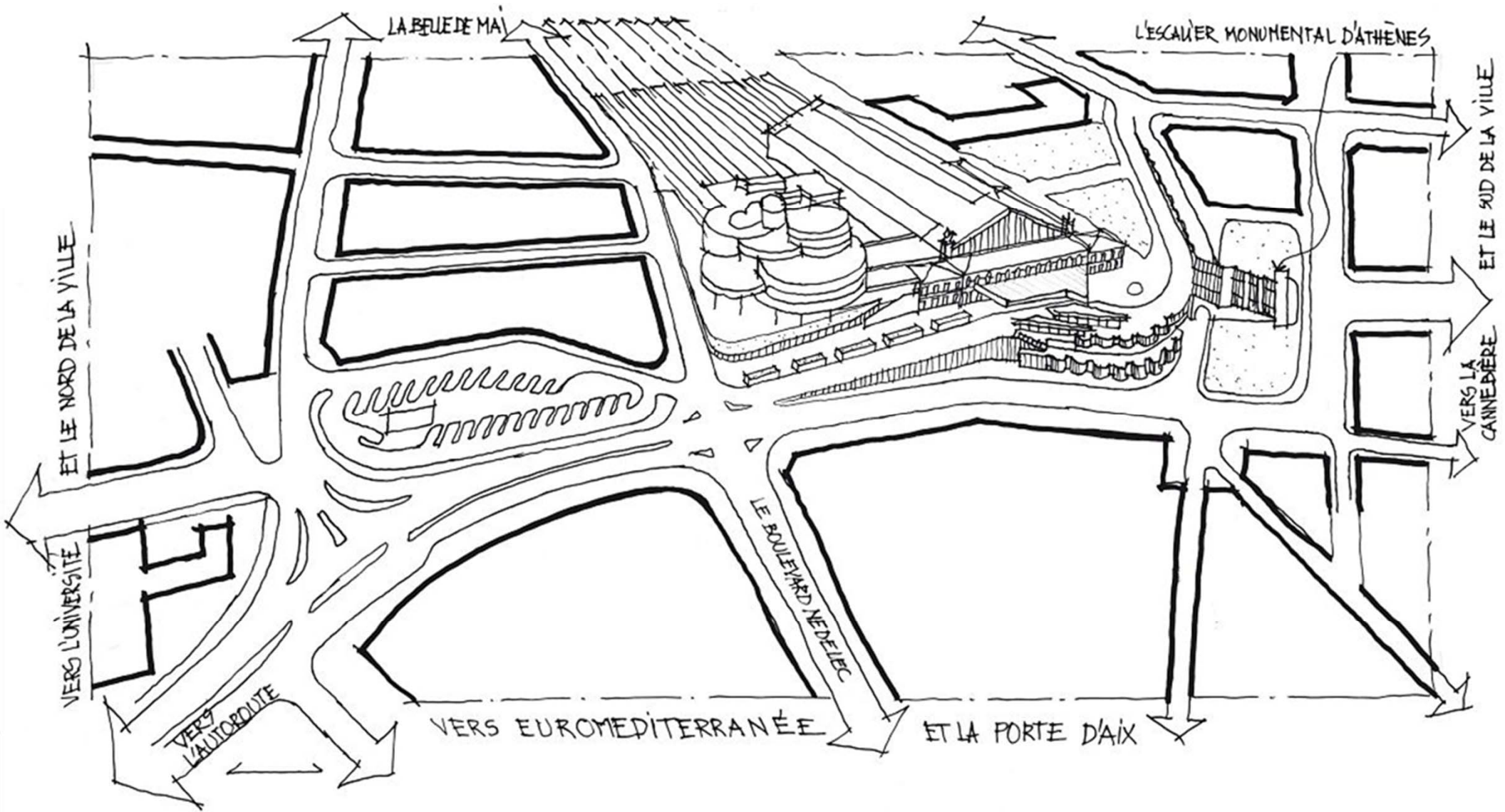
Sénes et Arnal, Architectes

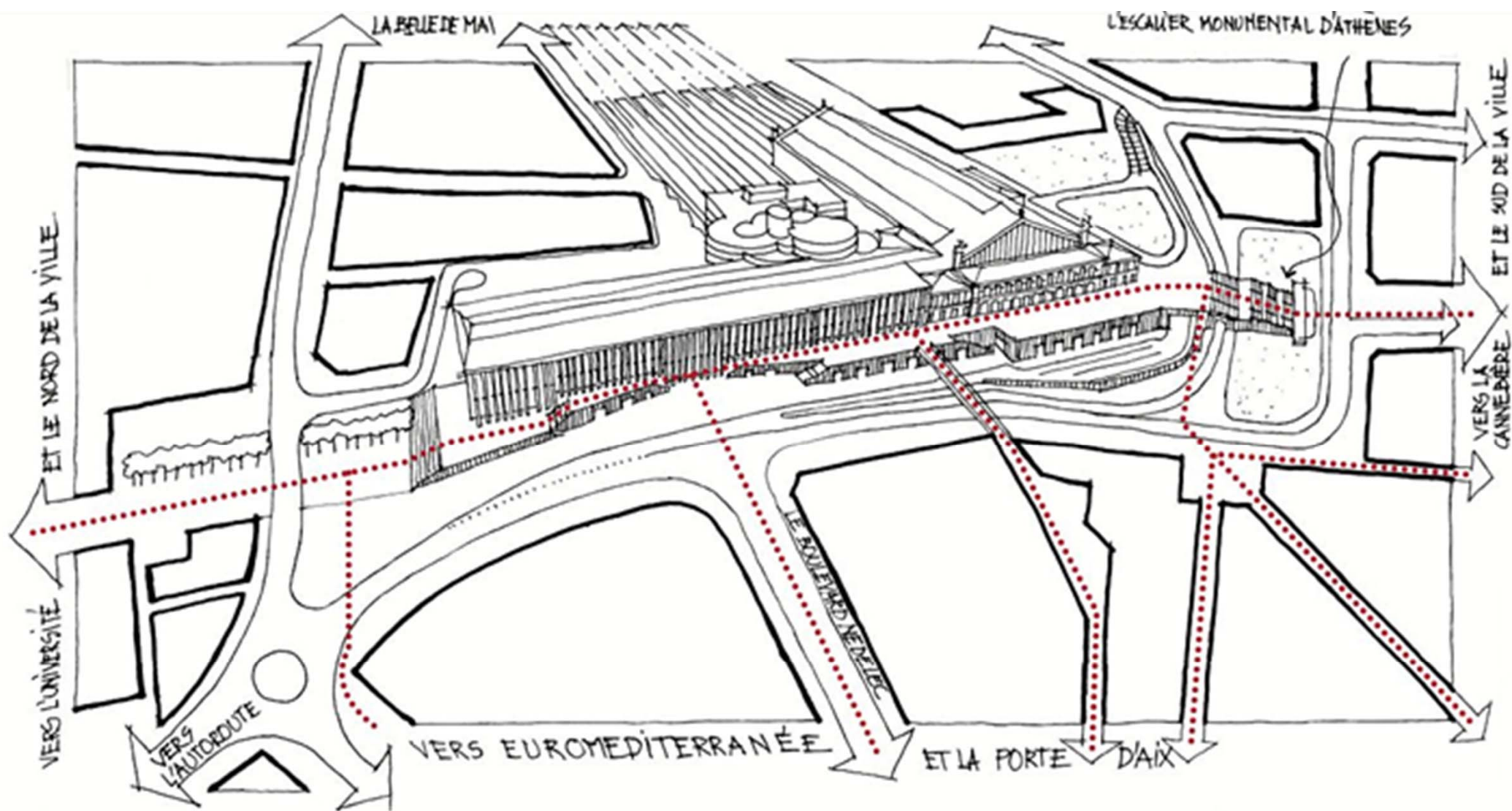










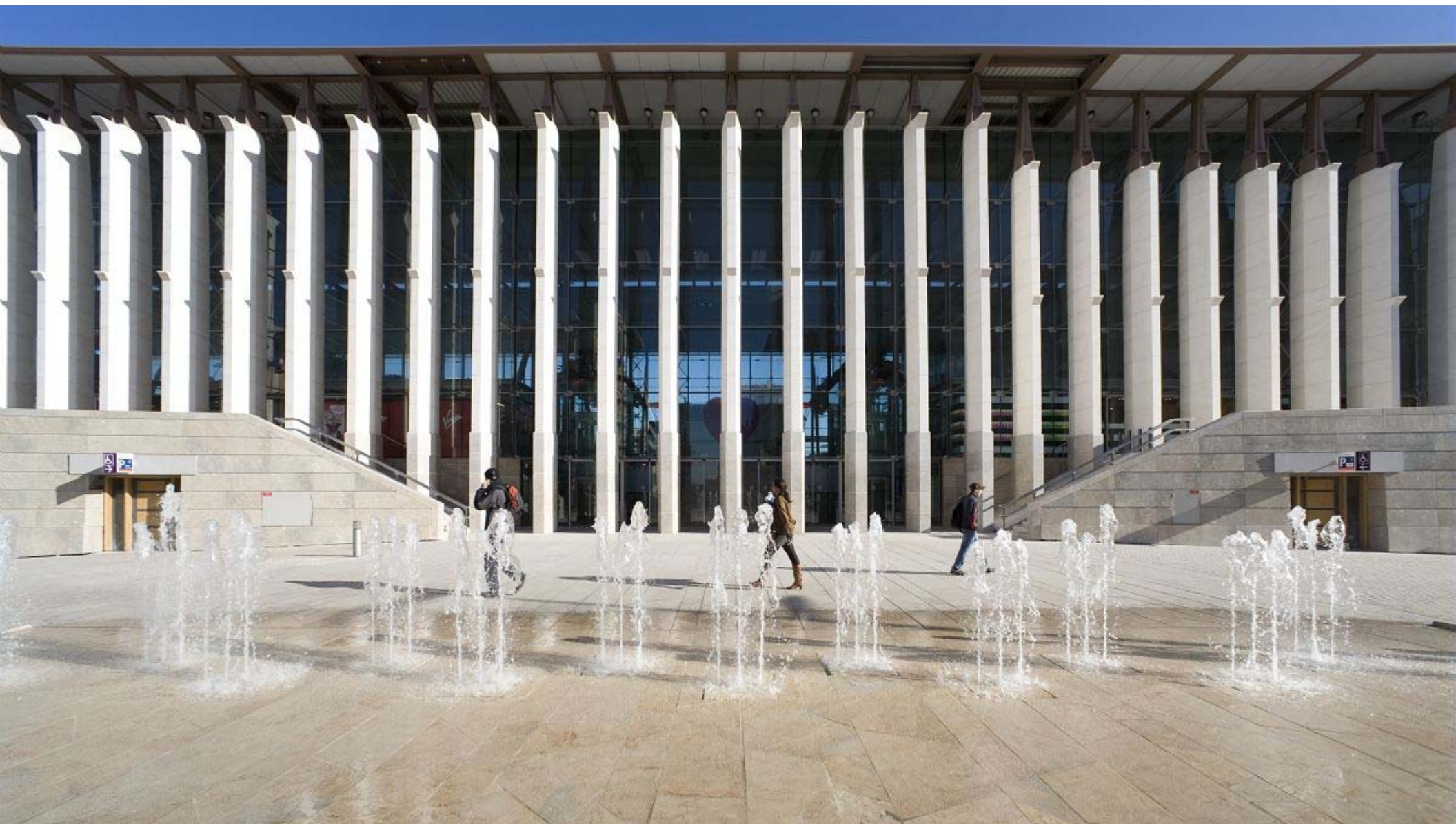


















Marseille Saint- Charles Station Redevelopment

Project Cost: €95 Million

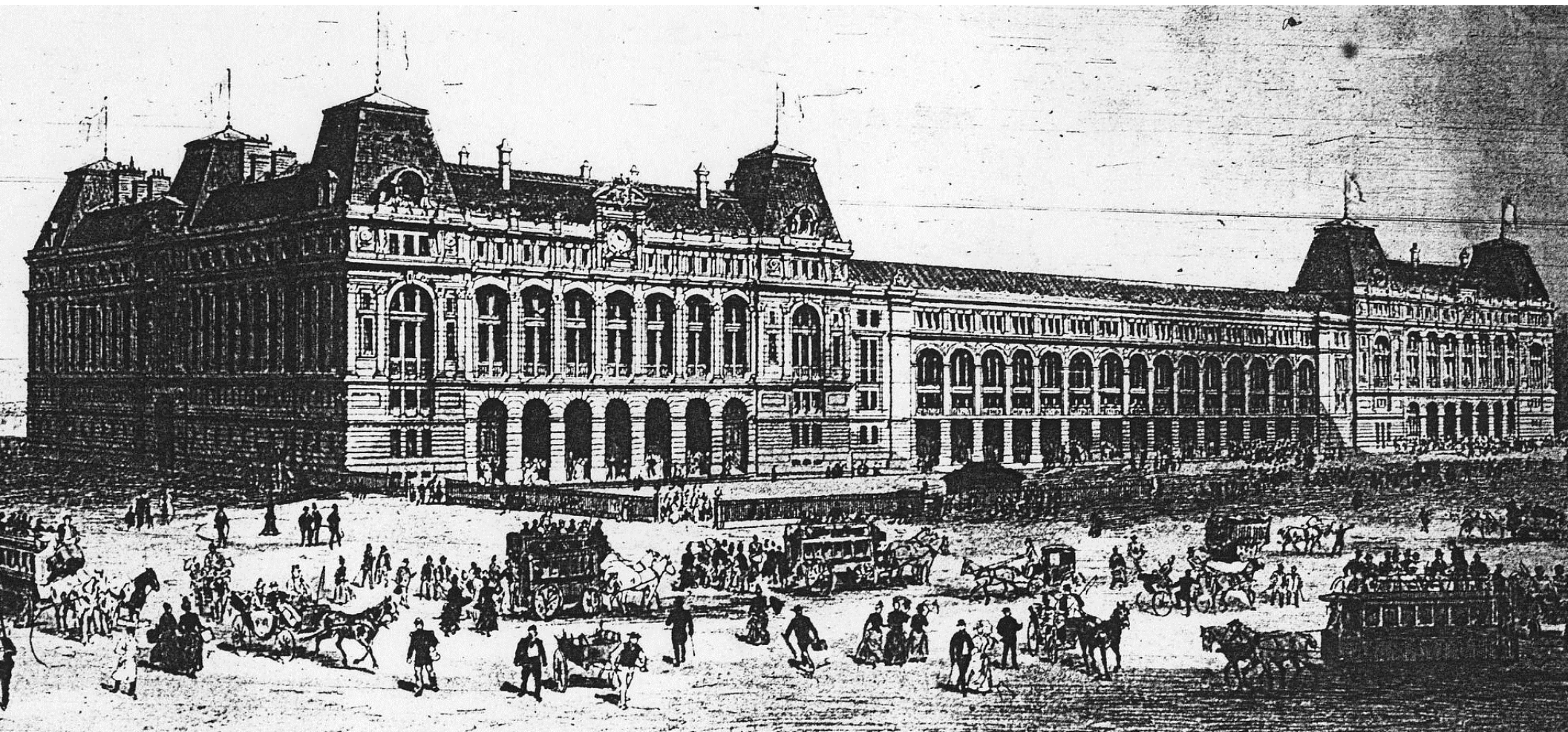
- MPM Urban Community (Marseille Metropolitan Authority) 21.6%
- Bouches de Rhône Department 8.5%
- PACA Regional Council (Provence, Alpes, Côte d'Azur) 16.5%
- French Government 2.6%
- Euroméditerranée (*a government-established development enterprise*) 13.2%
- European Regional Development Fund 11.5%
- French Railways, SNCF 26.1%

Saint-Lazare Multimodal Hub 2001

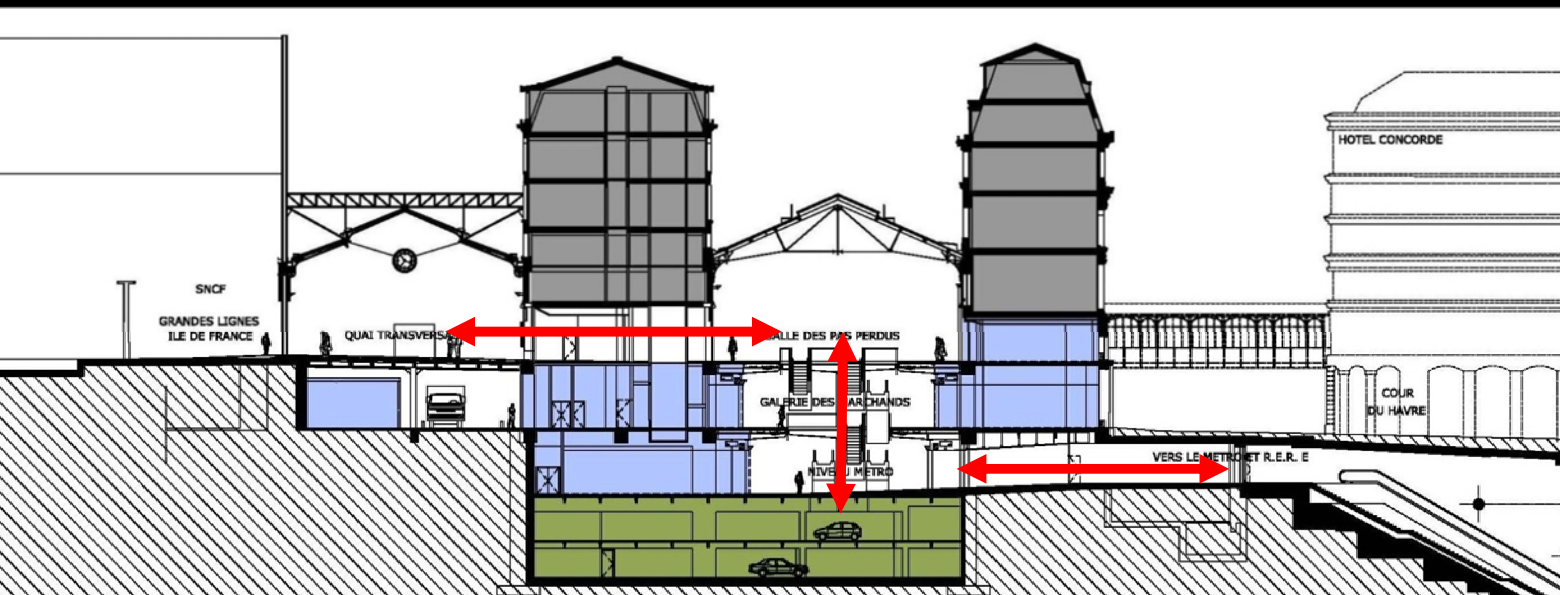
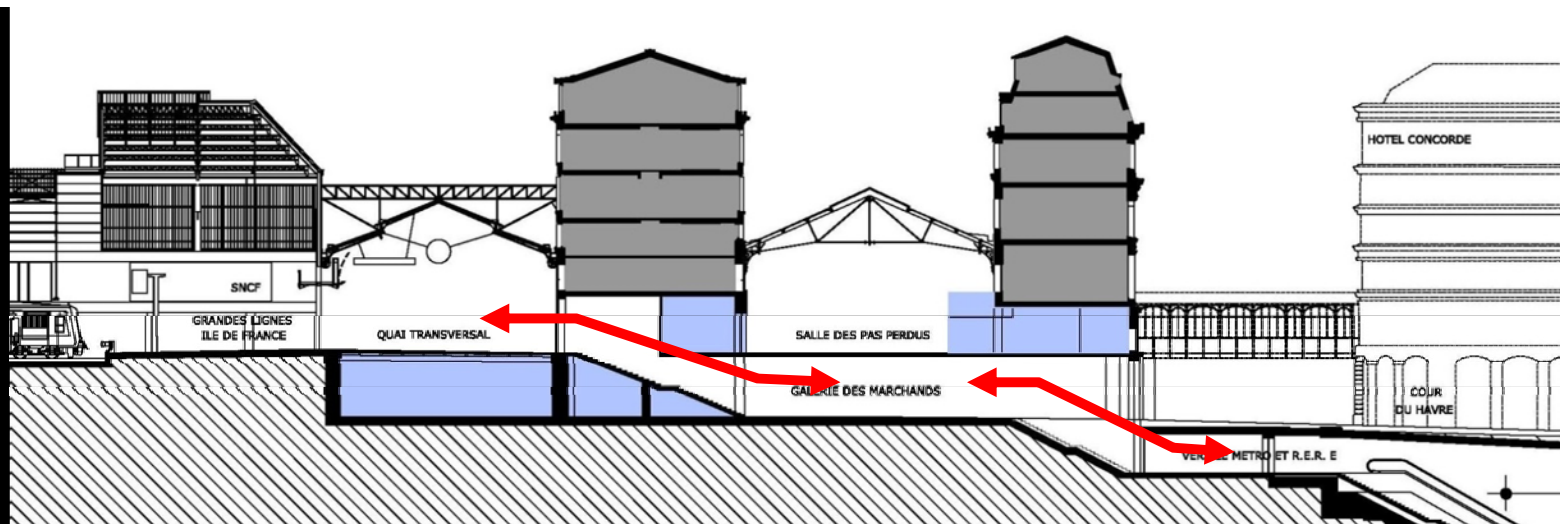






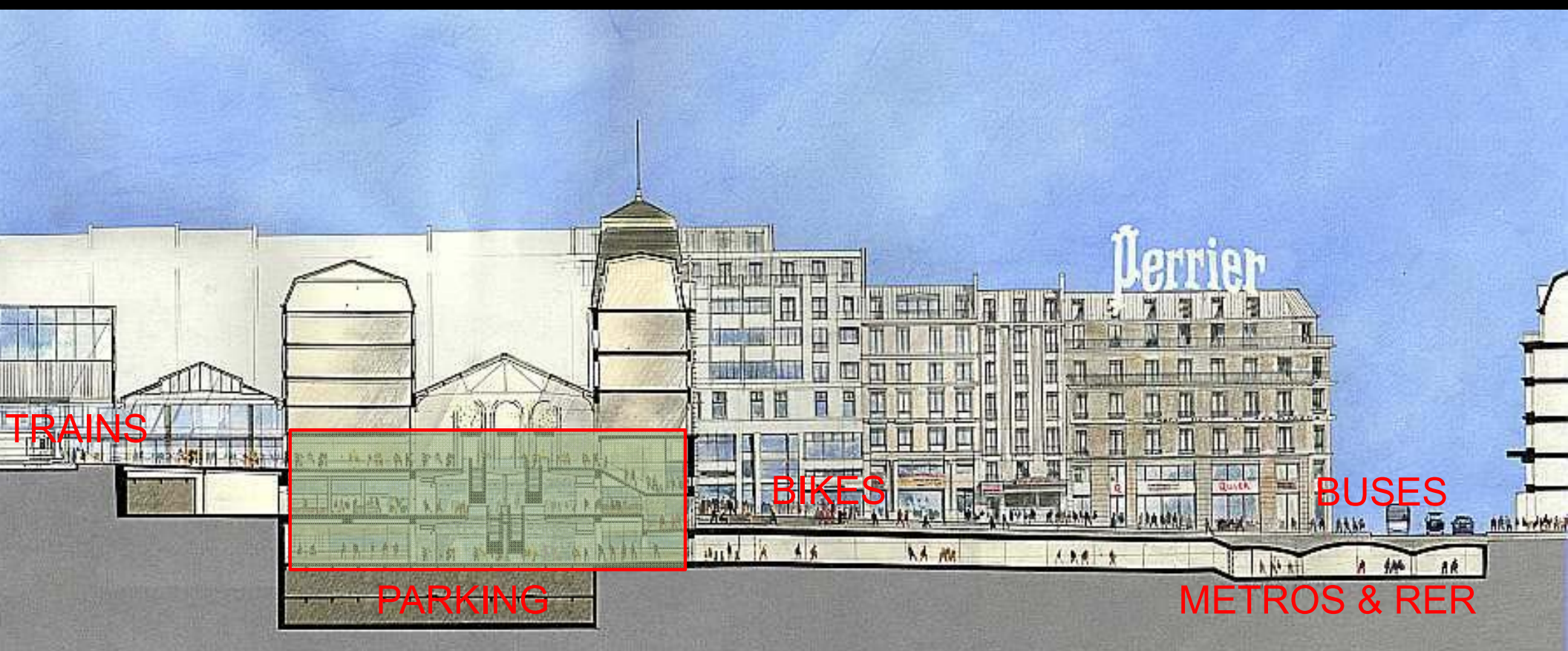








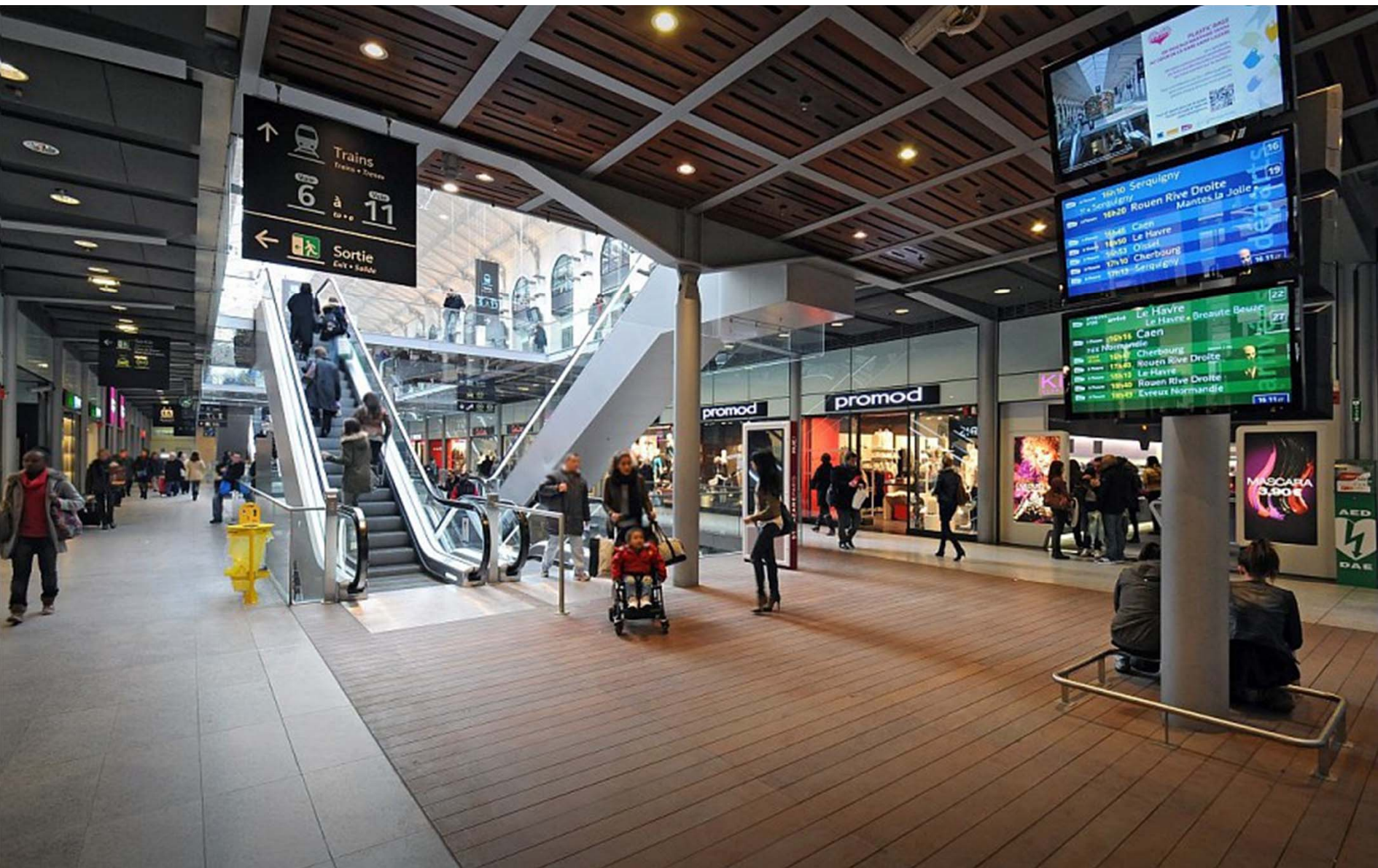


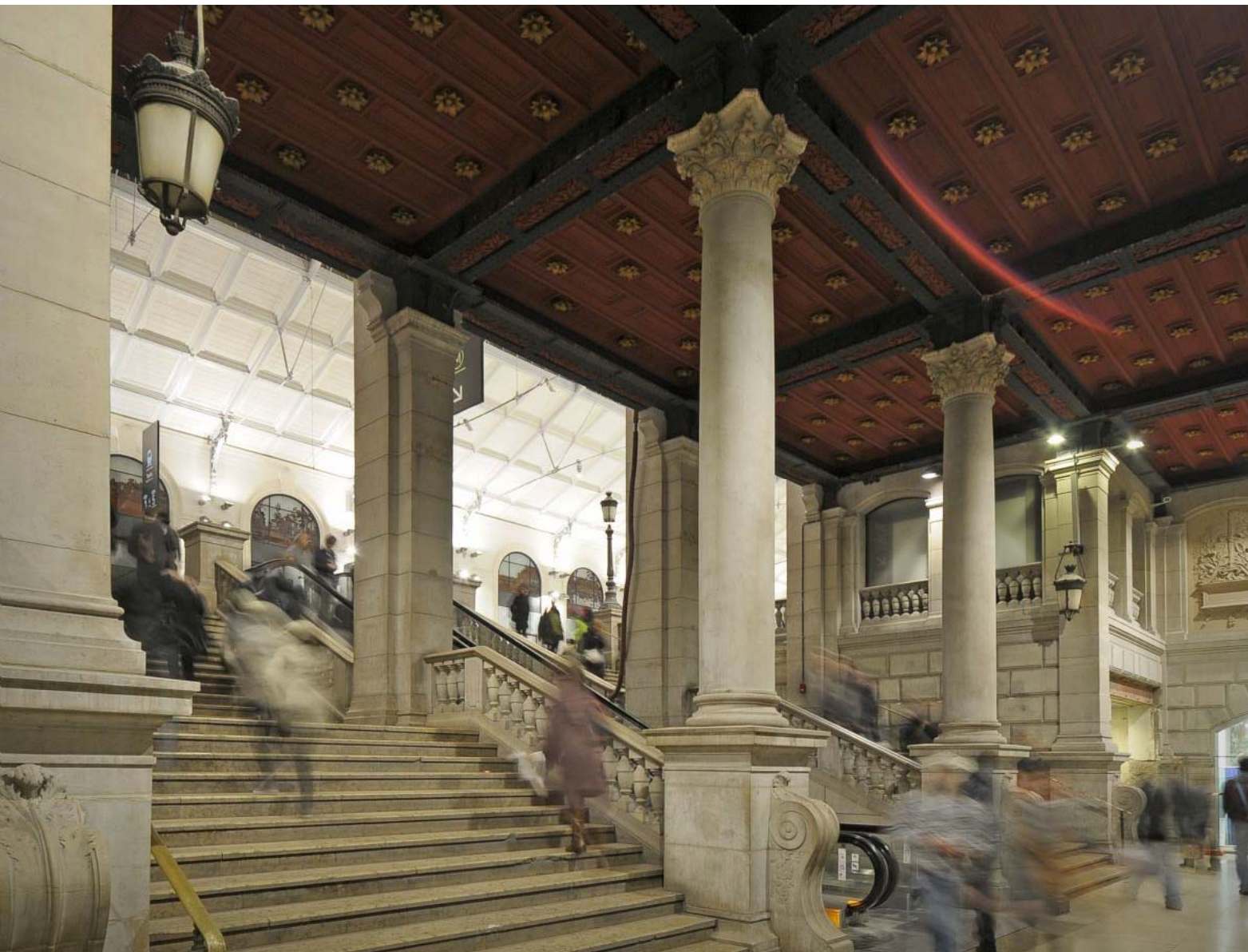












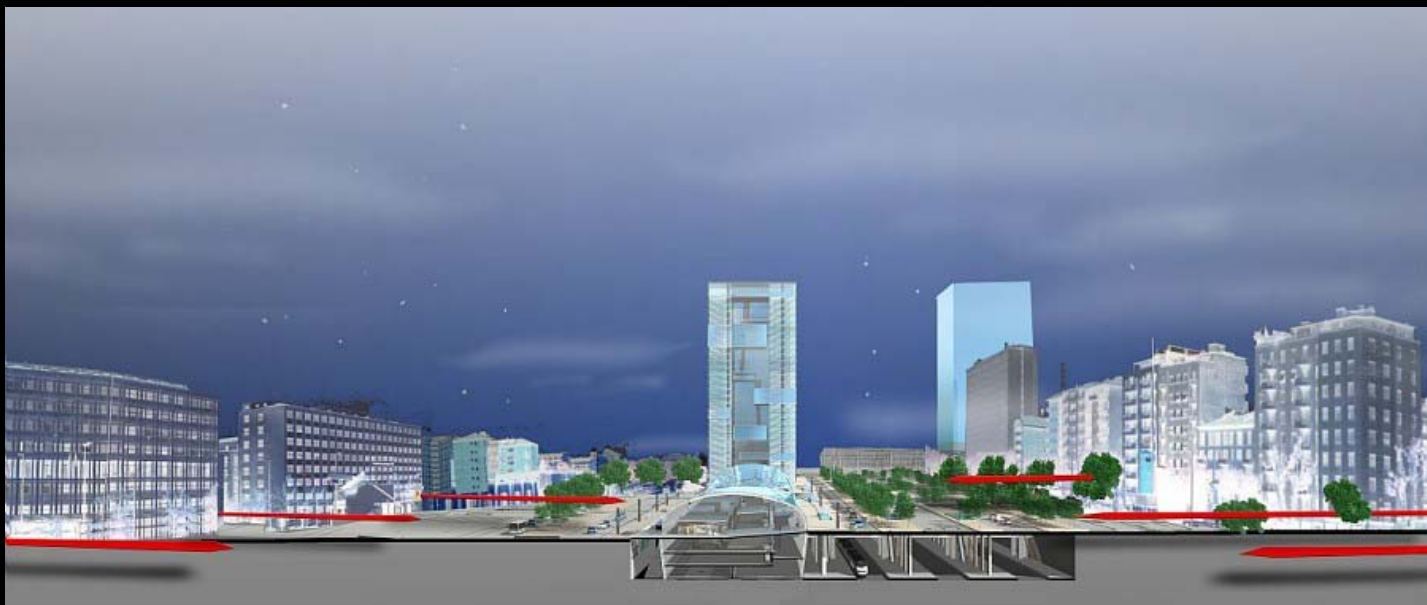


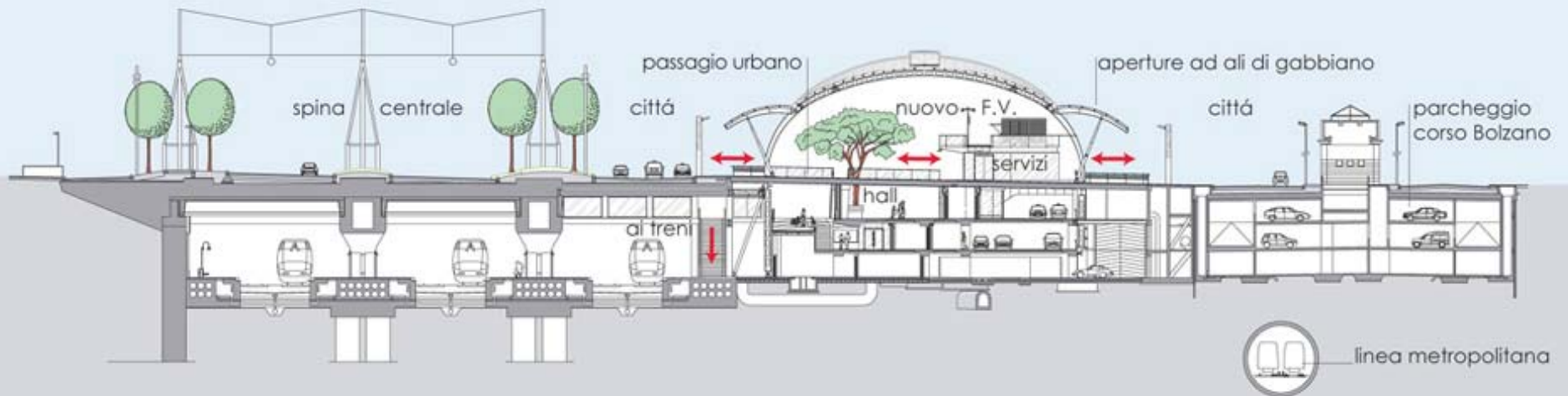
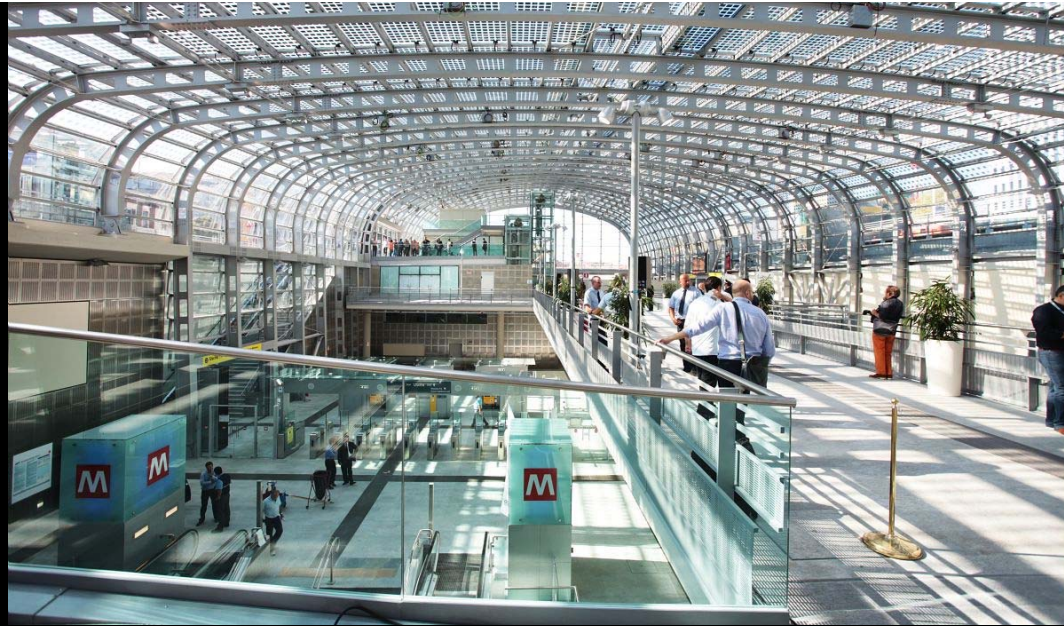
Paris Saint-Lazare

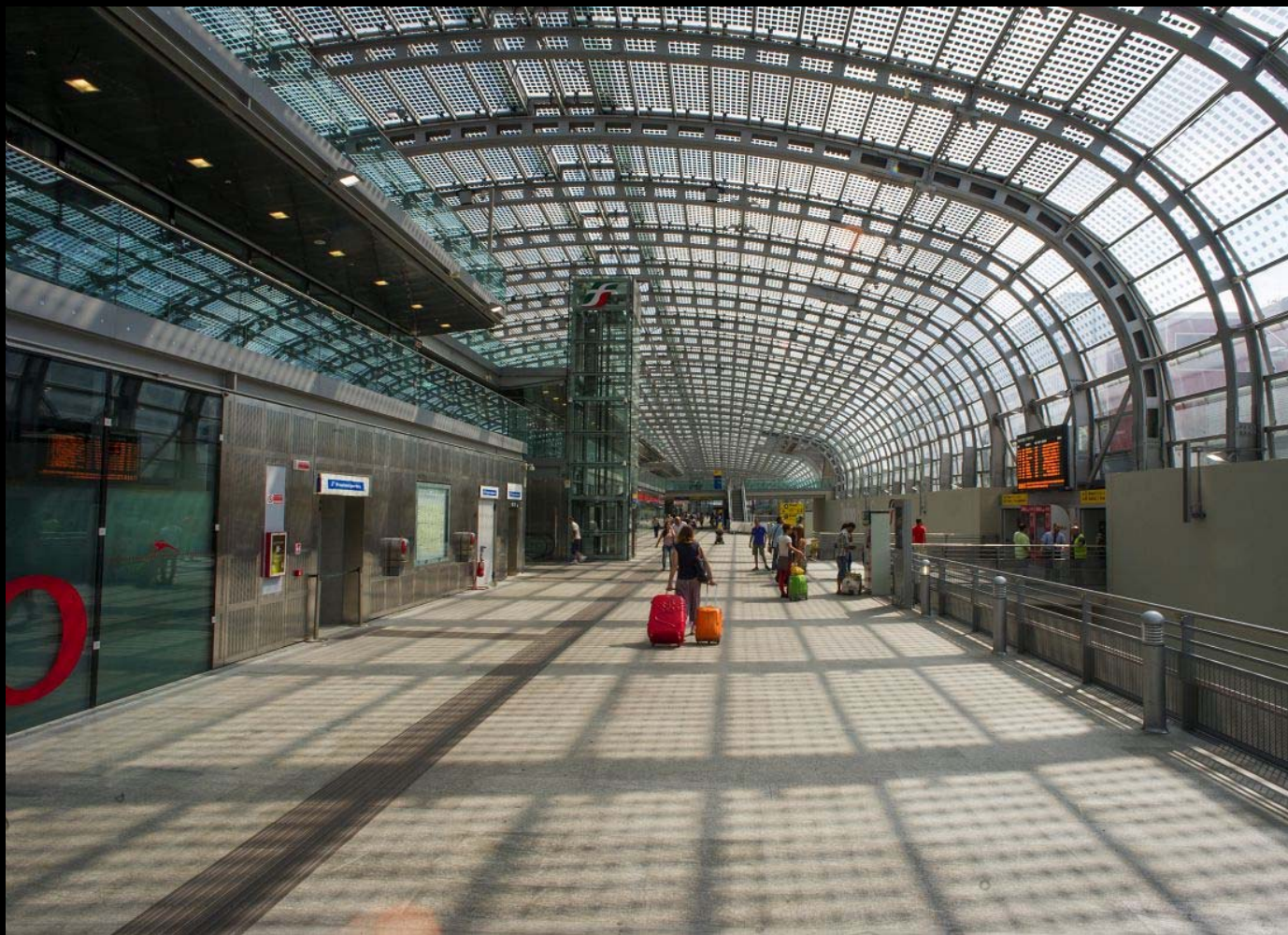


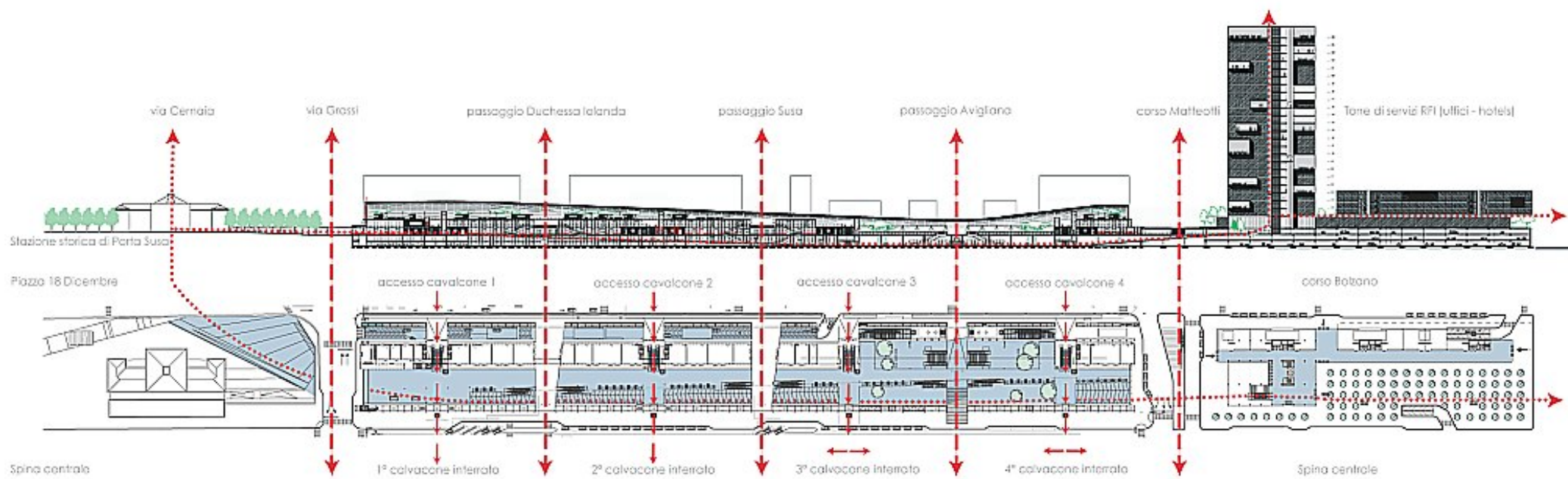
Porta Suza Railway Station 2014

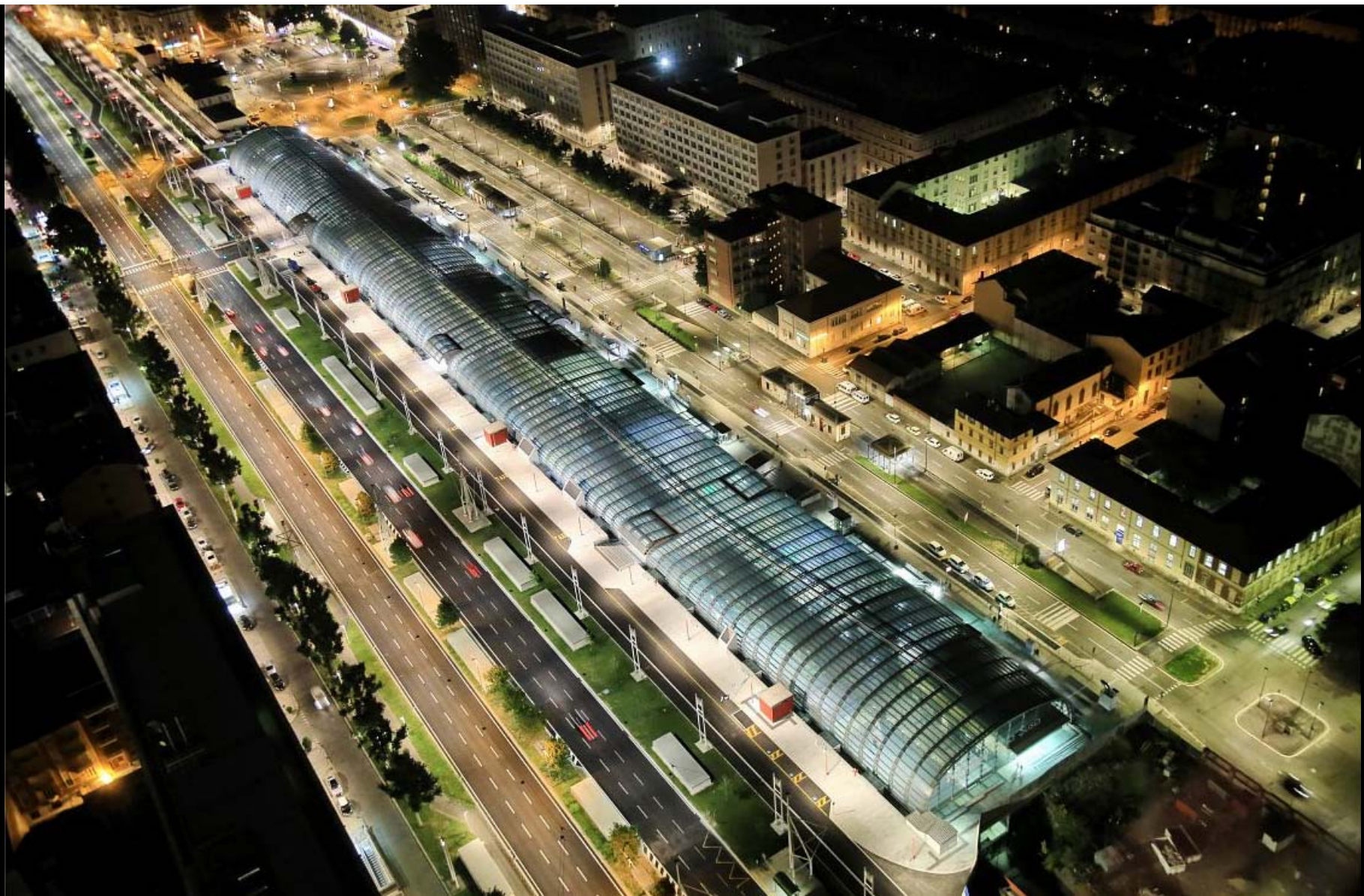




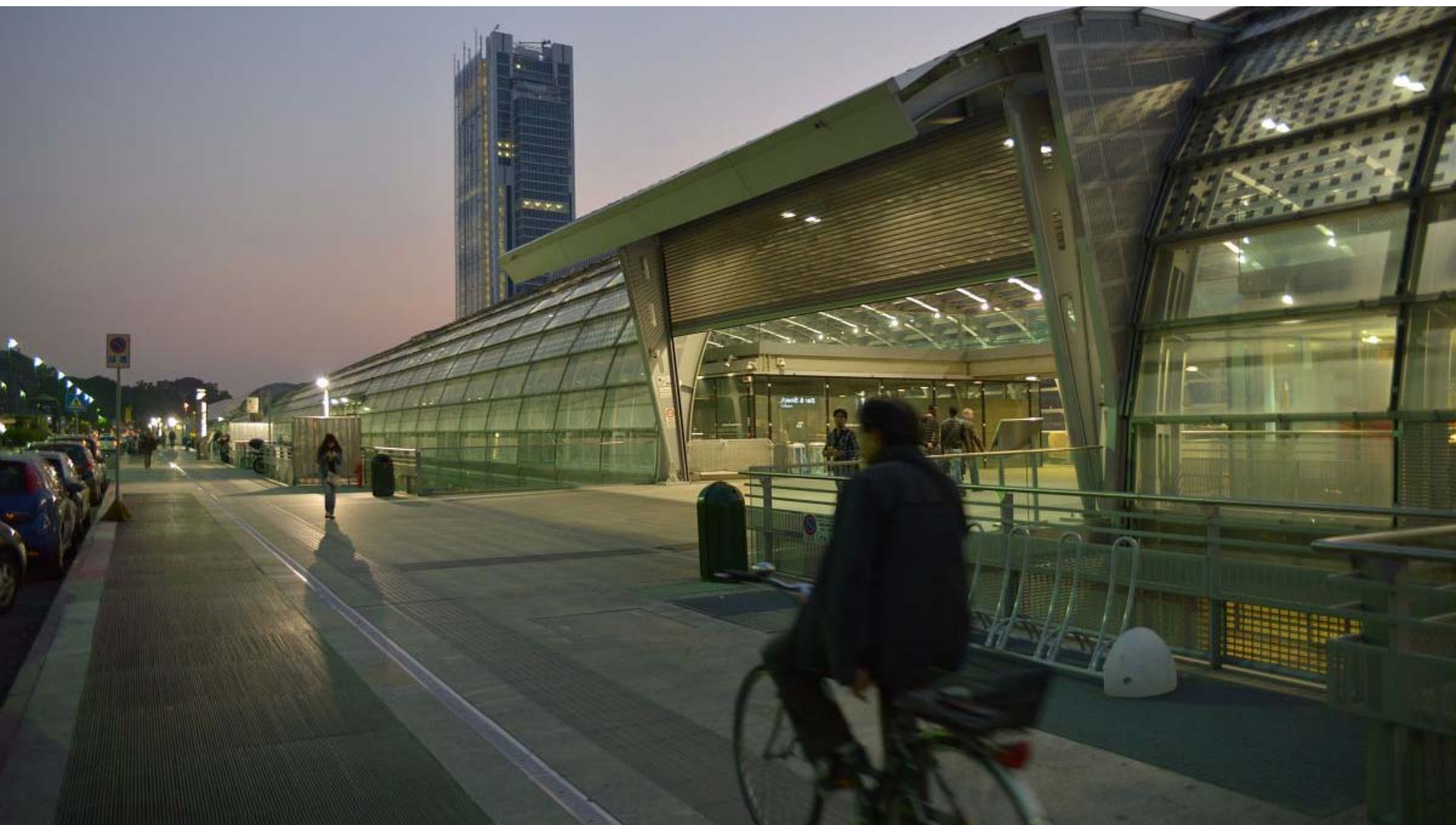












12. The Station as a City Booster

(The Rebirth of the Railway Station : Phase 4)

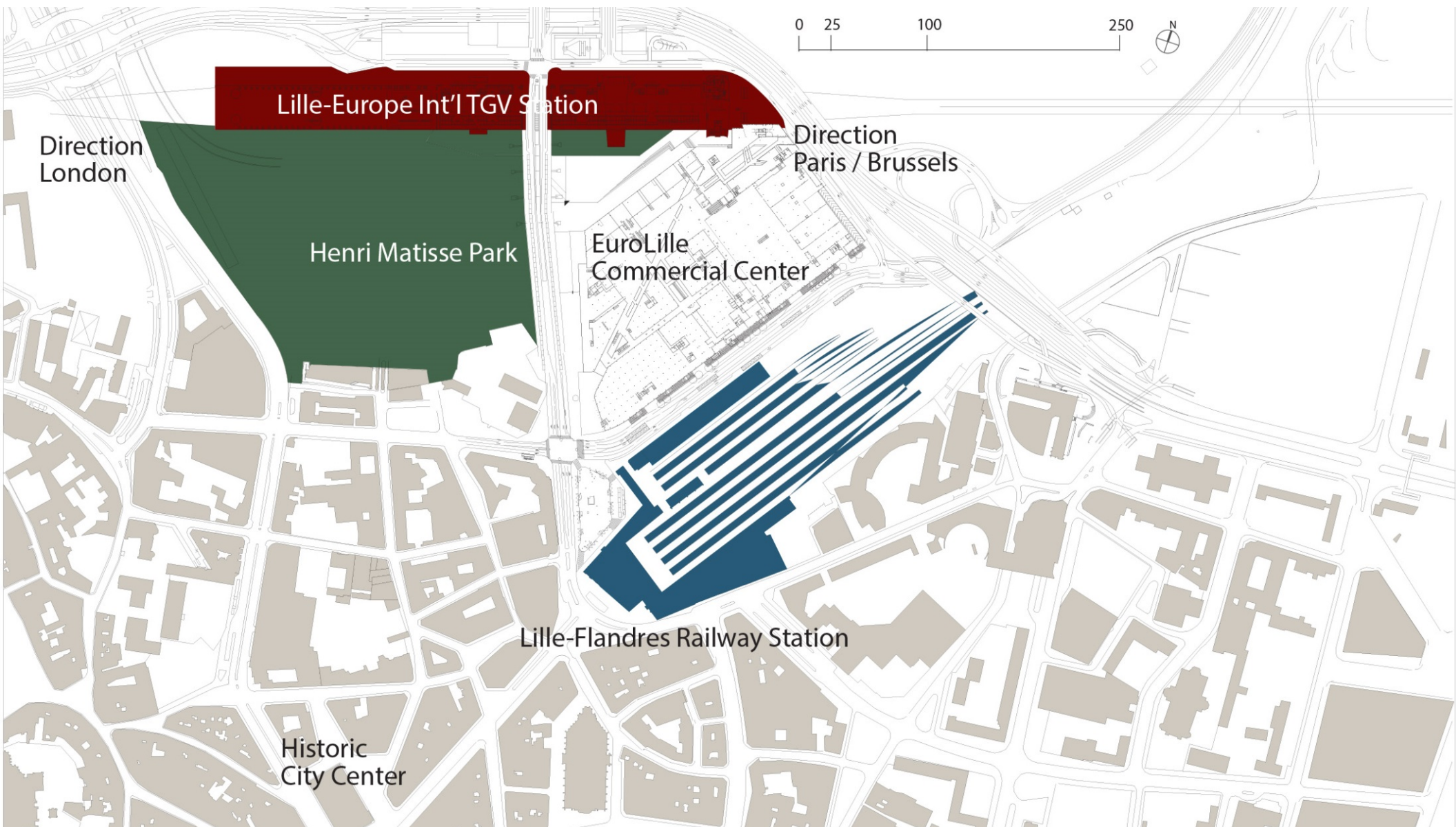


**Lille-Europe
International
High-Speed
Rail Station
1994**









Lille-Europe Int'l TGV Station

Direction
London

Direction
Paris / Brussels

Henri Matisse Park

EuroLille
Commercial Center

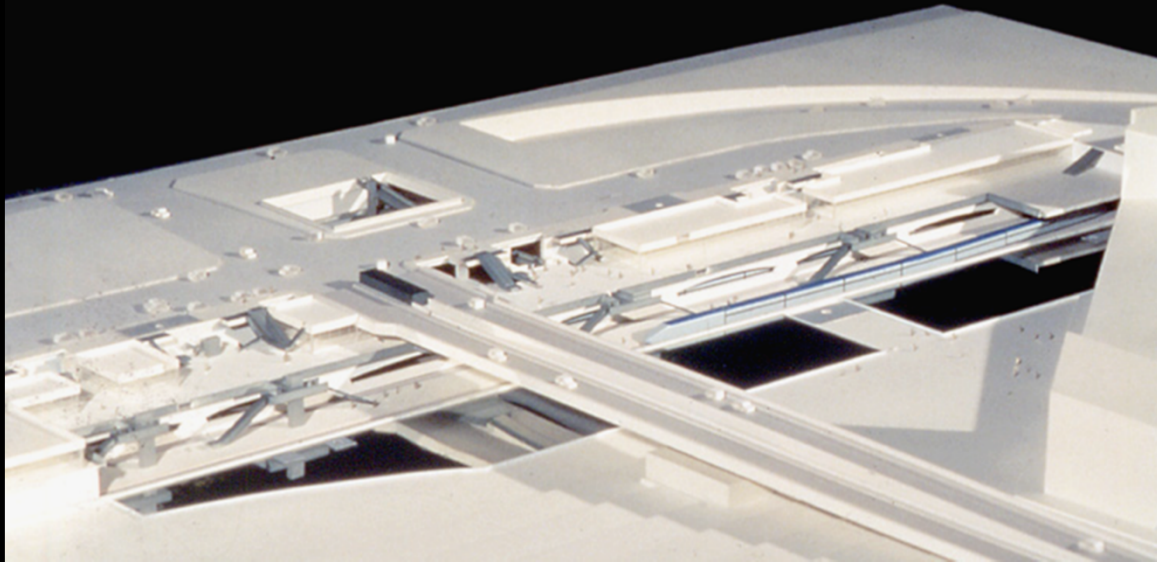
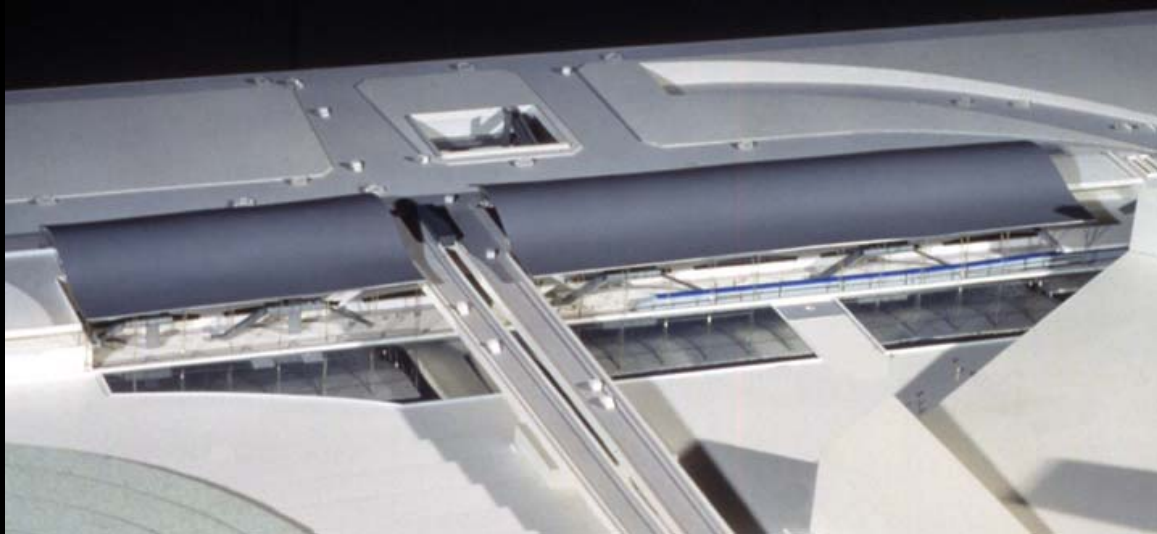
Lille-Flandres Railway Station

Historic
City Center











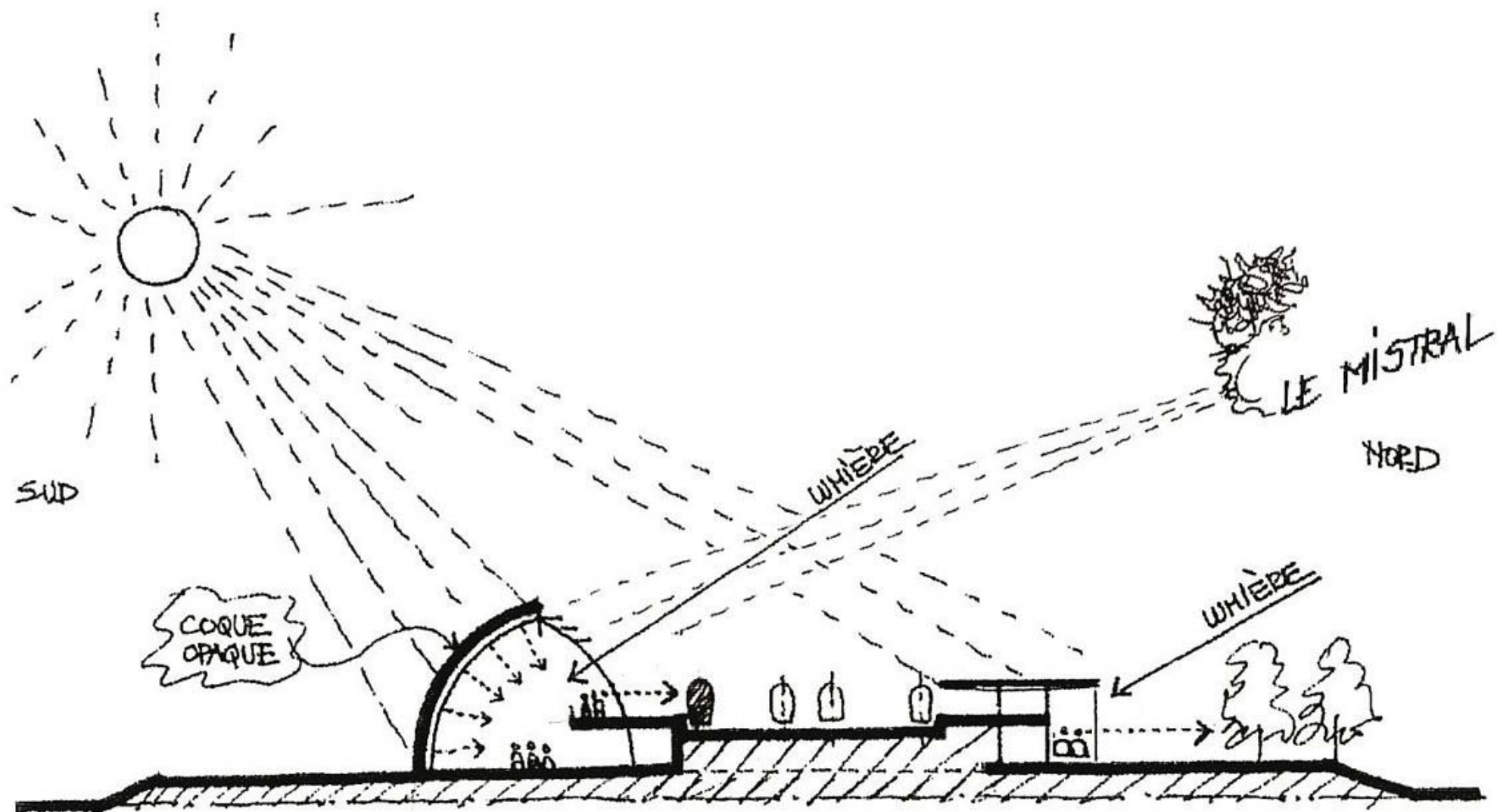
Avignon TGV Station 2001











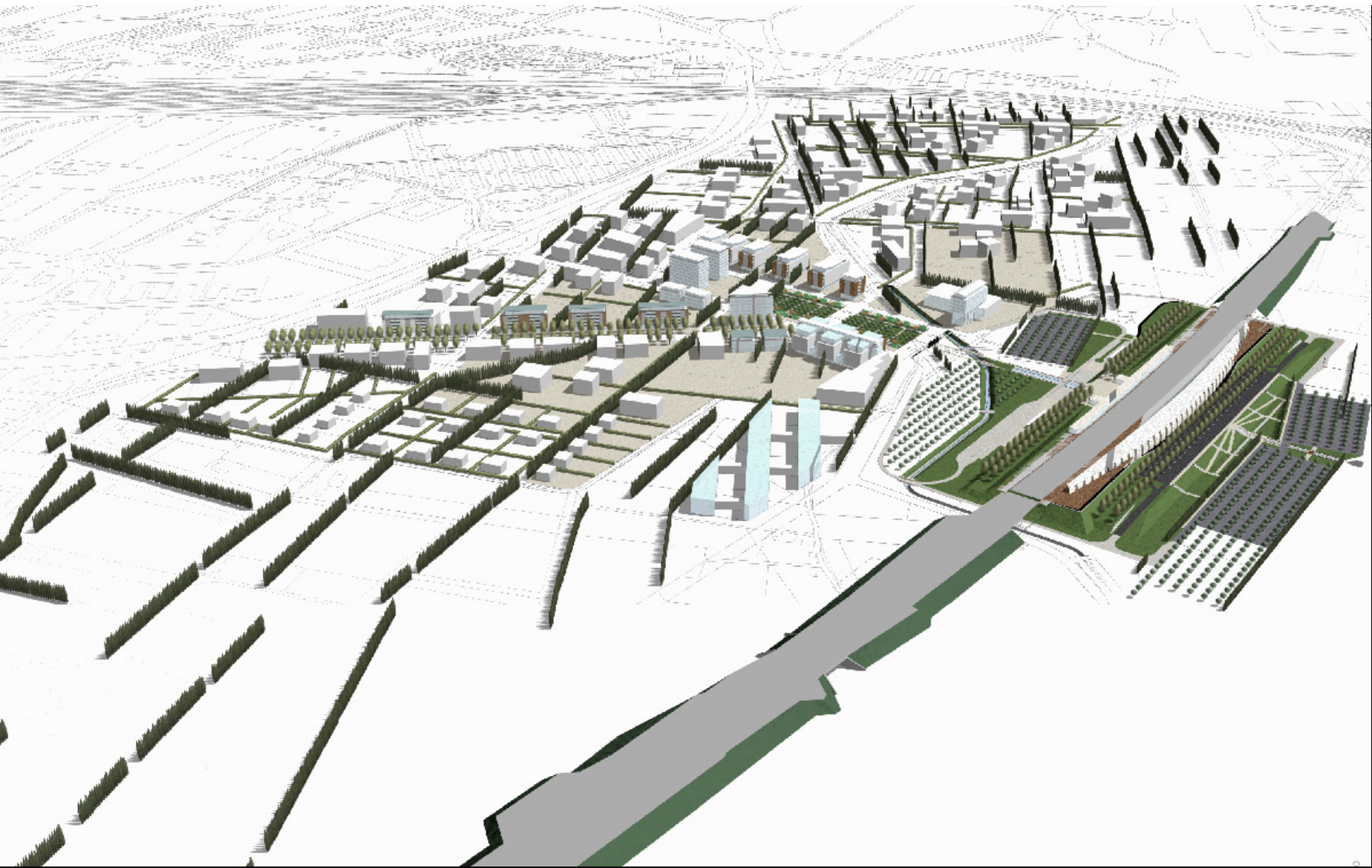
















Avignon TGV Station
AREP photo