

Saint Louis Union Station
Now the **Saint Louis Union
Station Hotel**

7. The High Speed Rail Effect



Shinkansen – Series '0'



General Motors' AeroTrain



United Aircraft UAC Turbo Train



TGV Sud-Est : 1981



TGV - V150

World land-speed record conventional-wheeled vehicles
357.2 mph – April 3, 2007

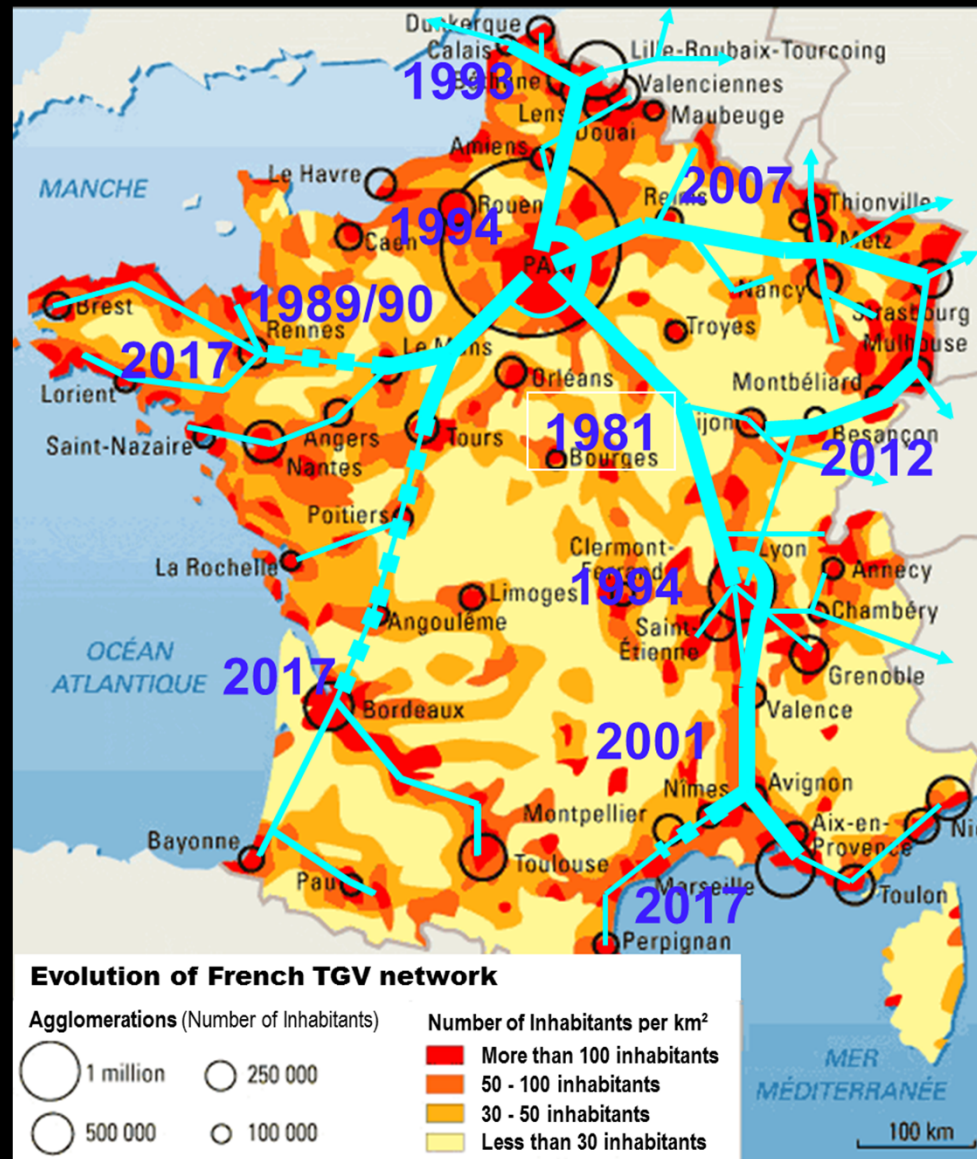




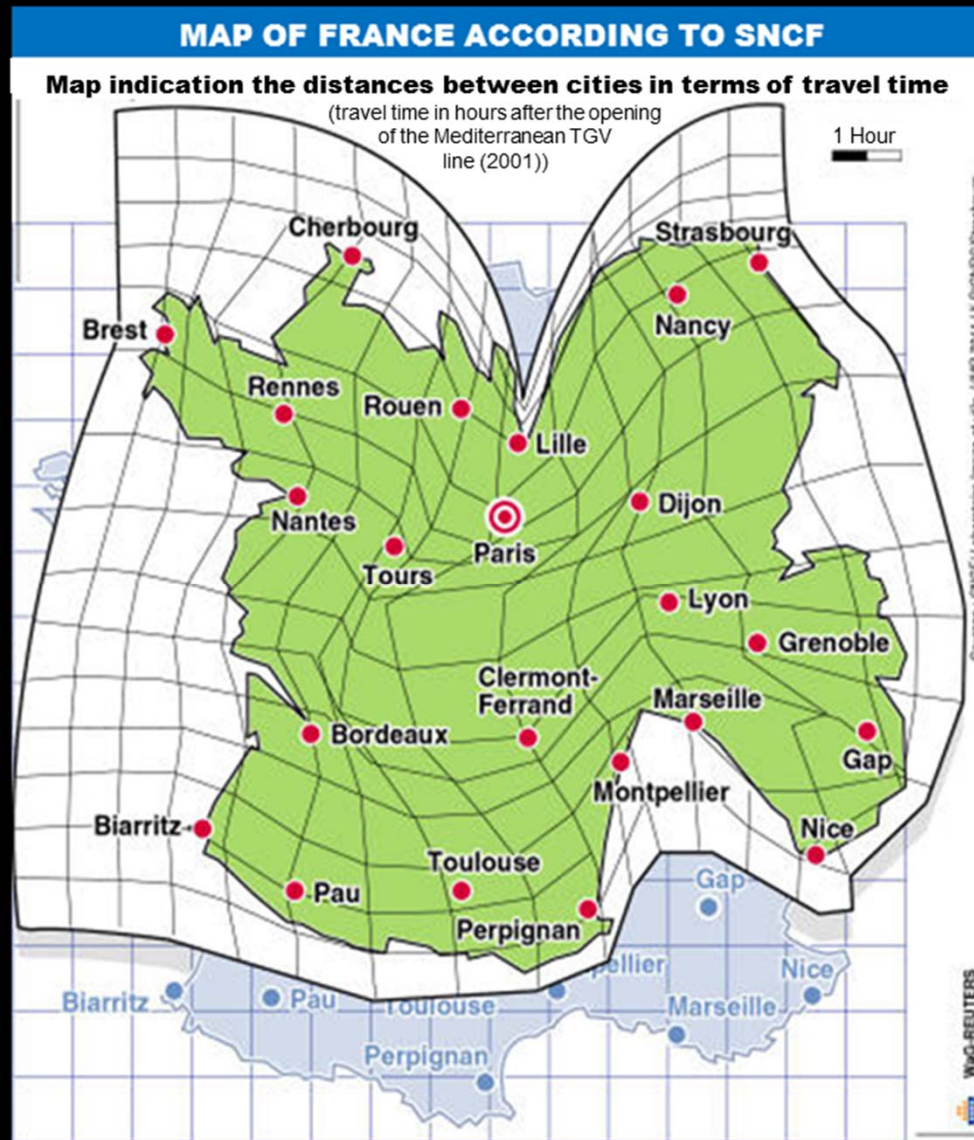
8. The Rebirth of the Railway Station : Phase 1

The Development of the TGV Network

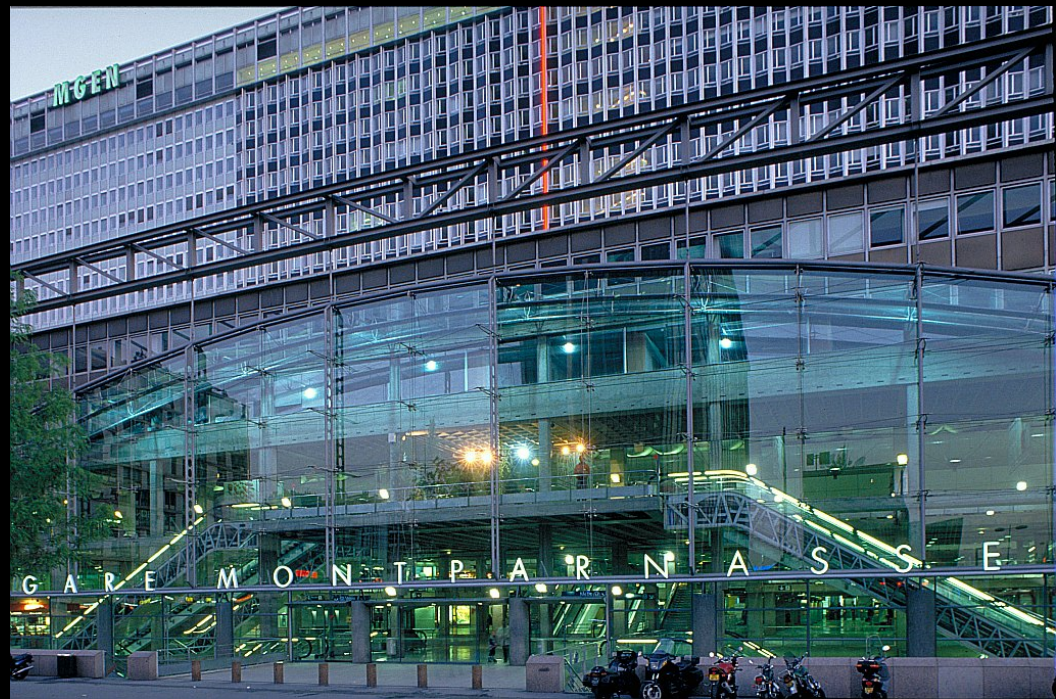
1981- 2017



The TGV's Effect on France



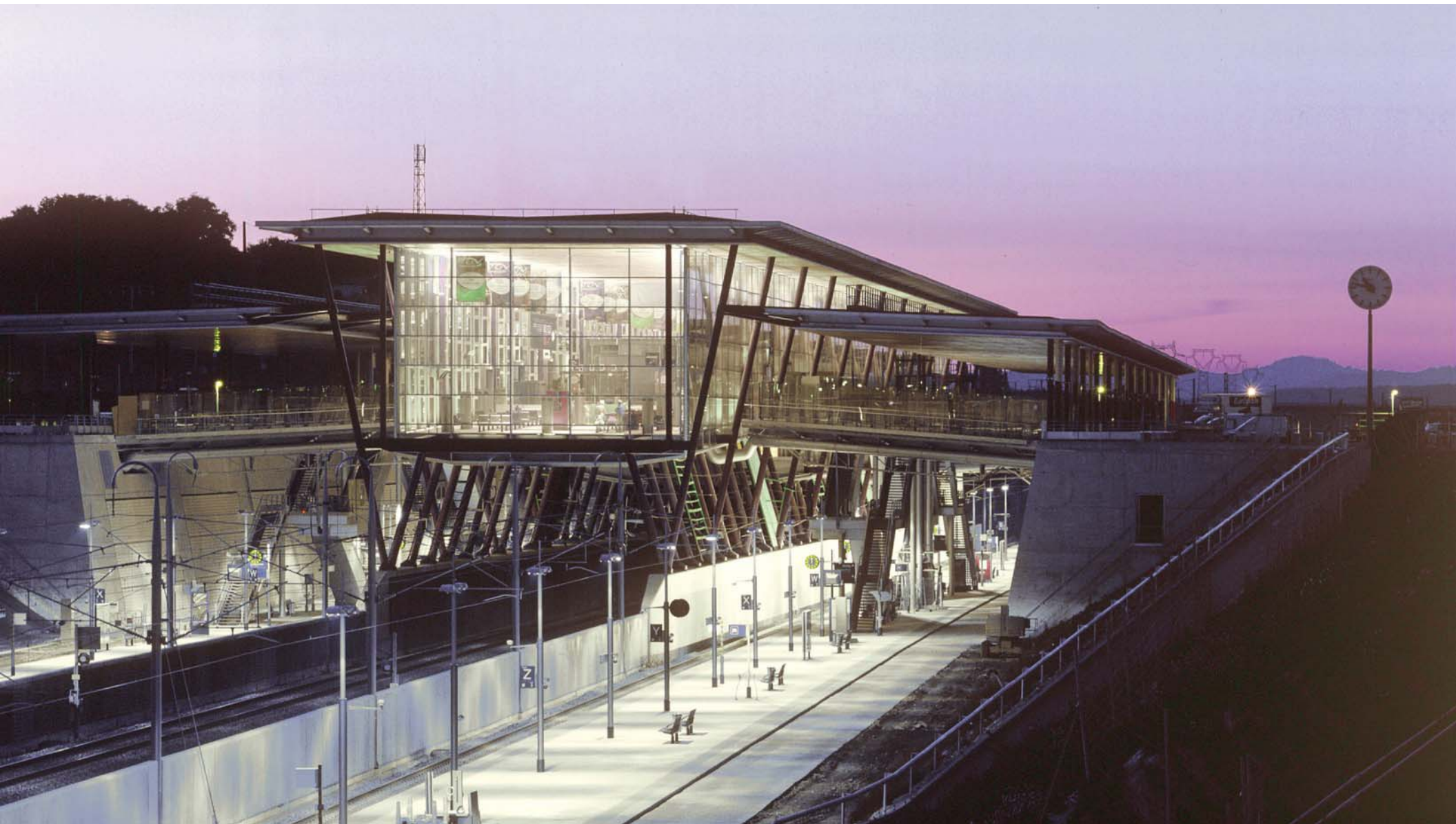
Paris Gare Montparnasse 1990

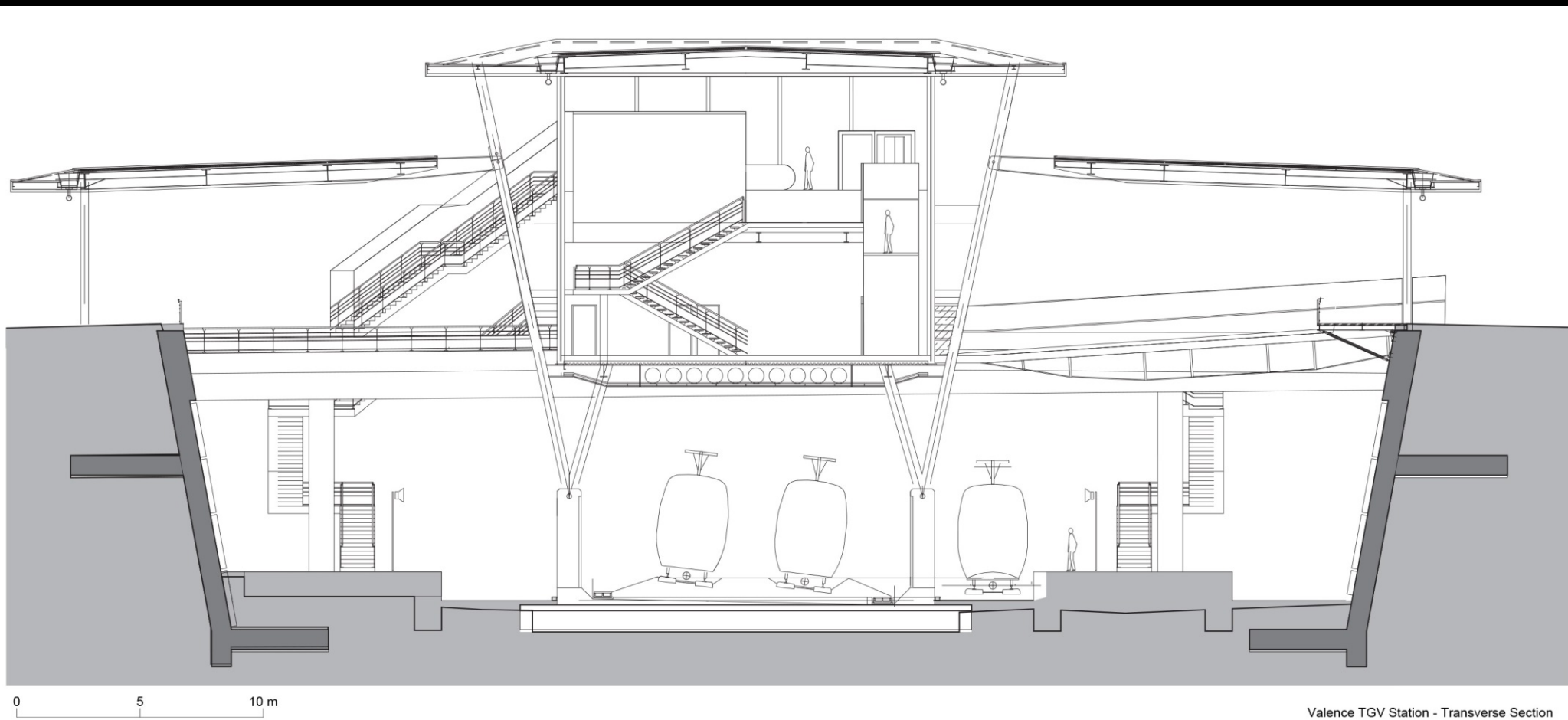


Valence TGV Station 2001

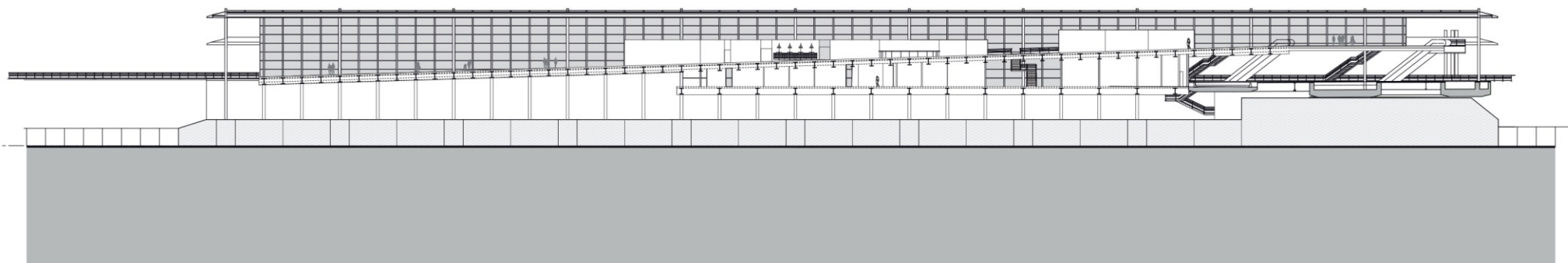








Valence TGV Station - Transverse Section



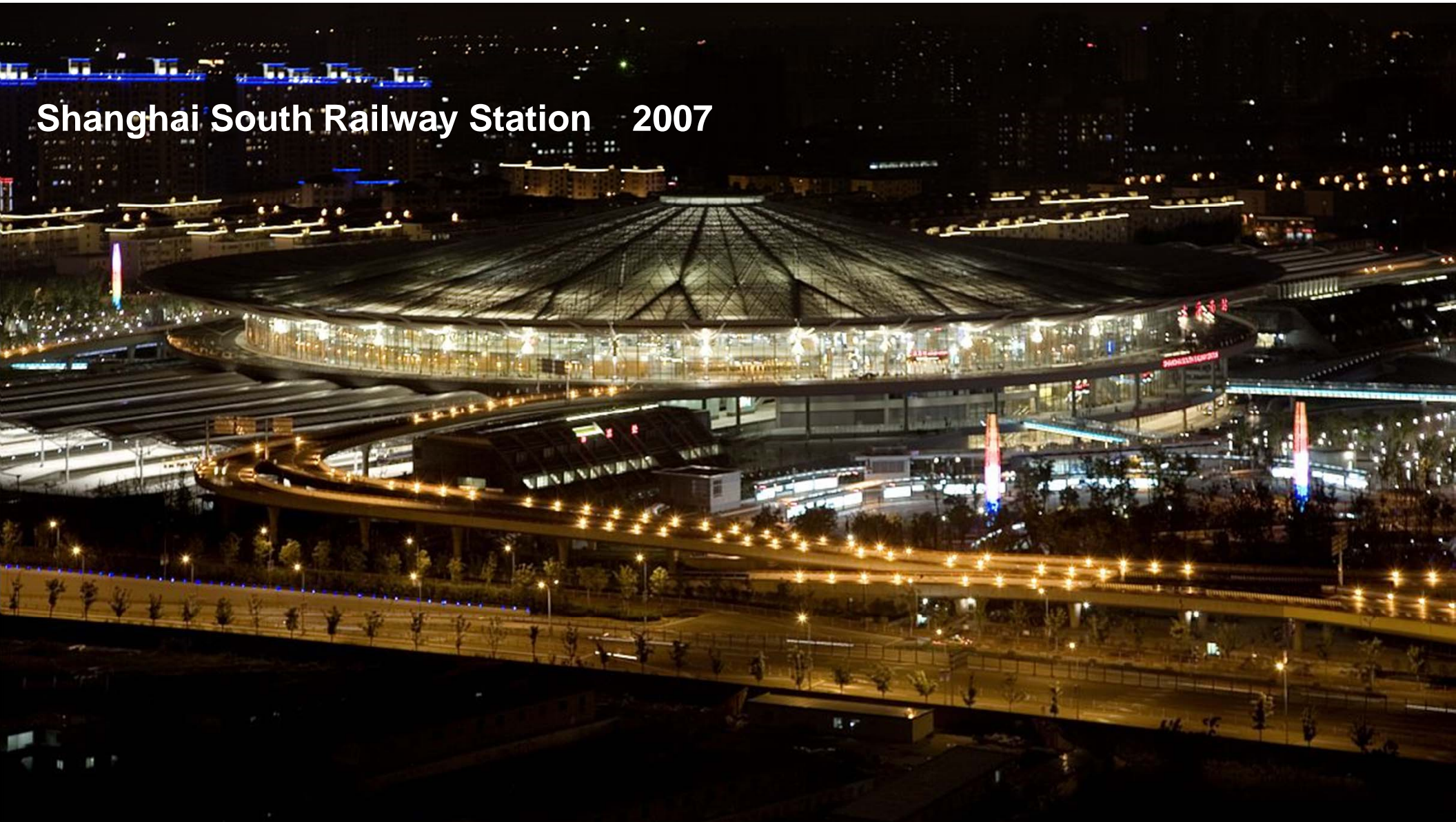
0 10 50 m Valence TGV Station - Longitudinal Section



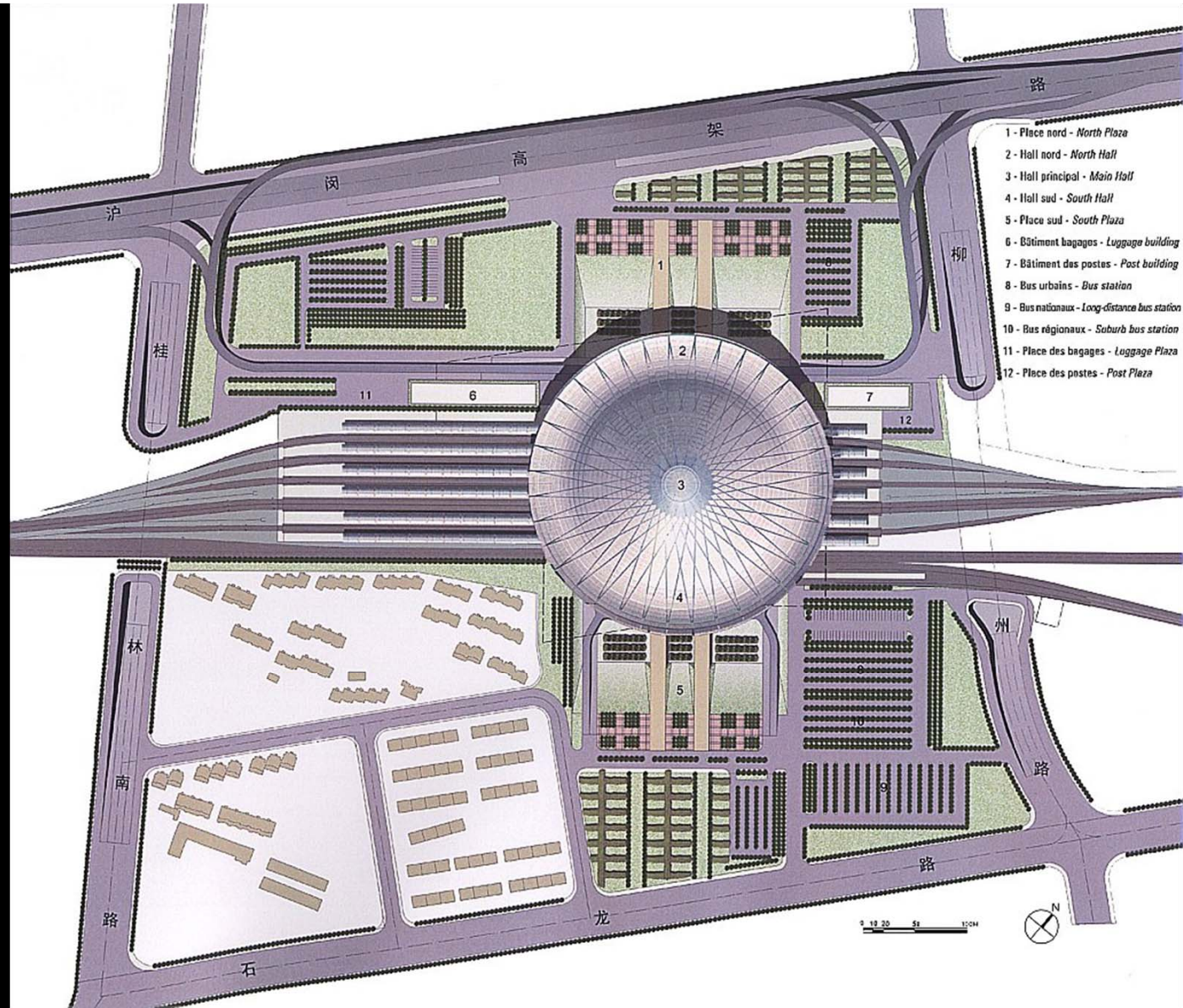




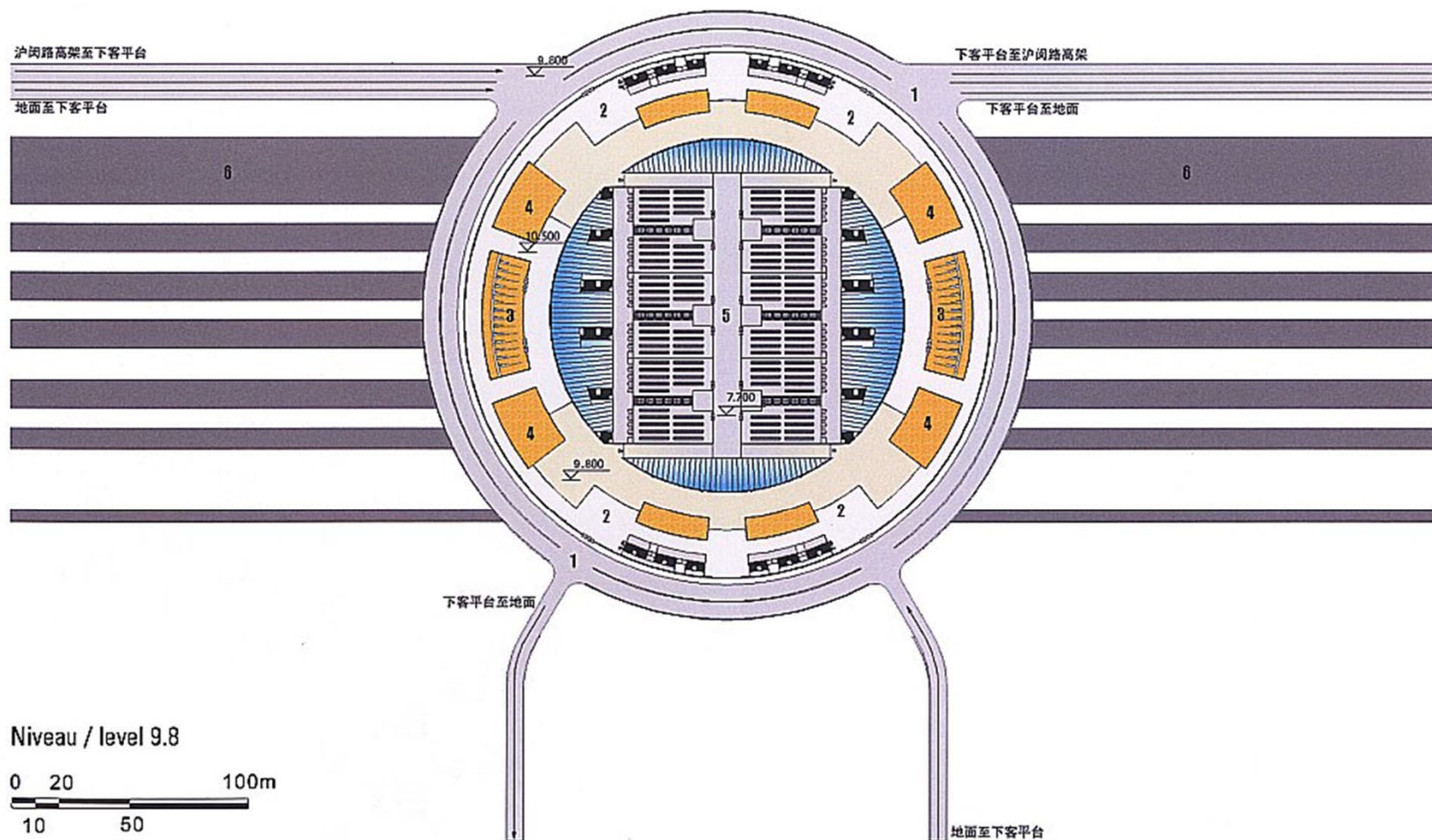
Shanghai South Railway Station 2007





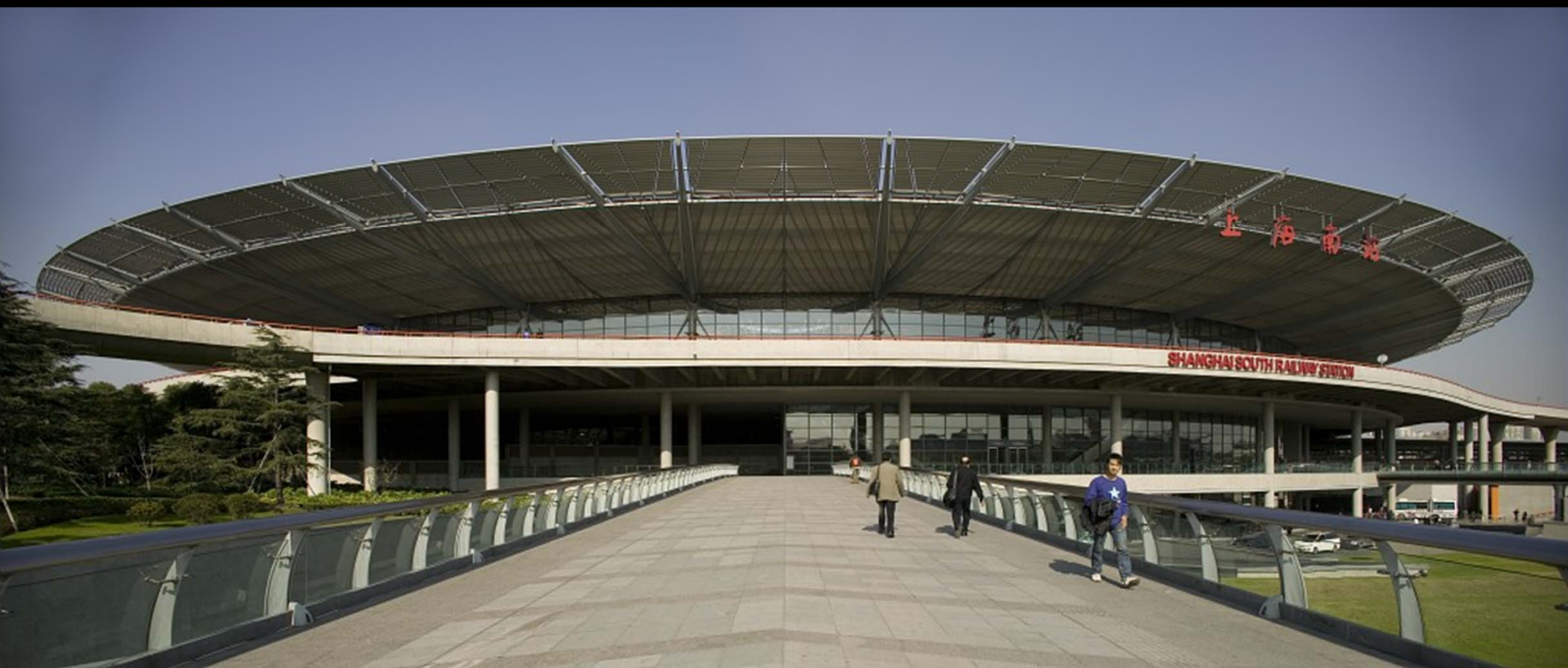


- 1 - anneau des déposes - *drop off ring*
- 2 - salle des départs - *departure room*
- 3 - espaces vente de billets - *ticket sales desks*
- 4 - espaces commerciaux - *shopping area*



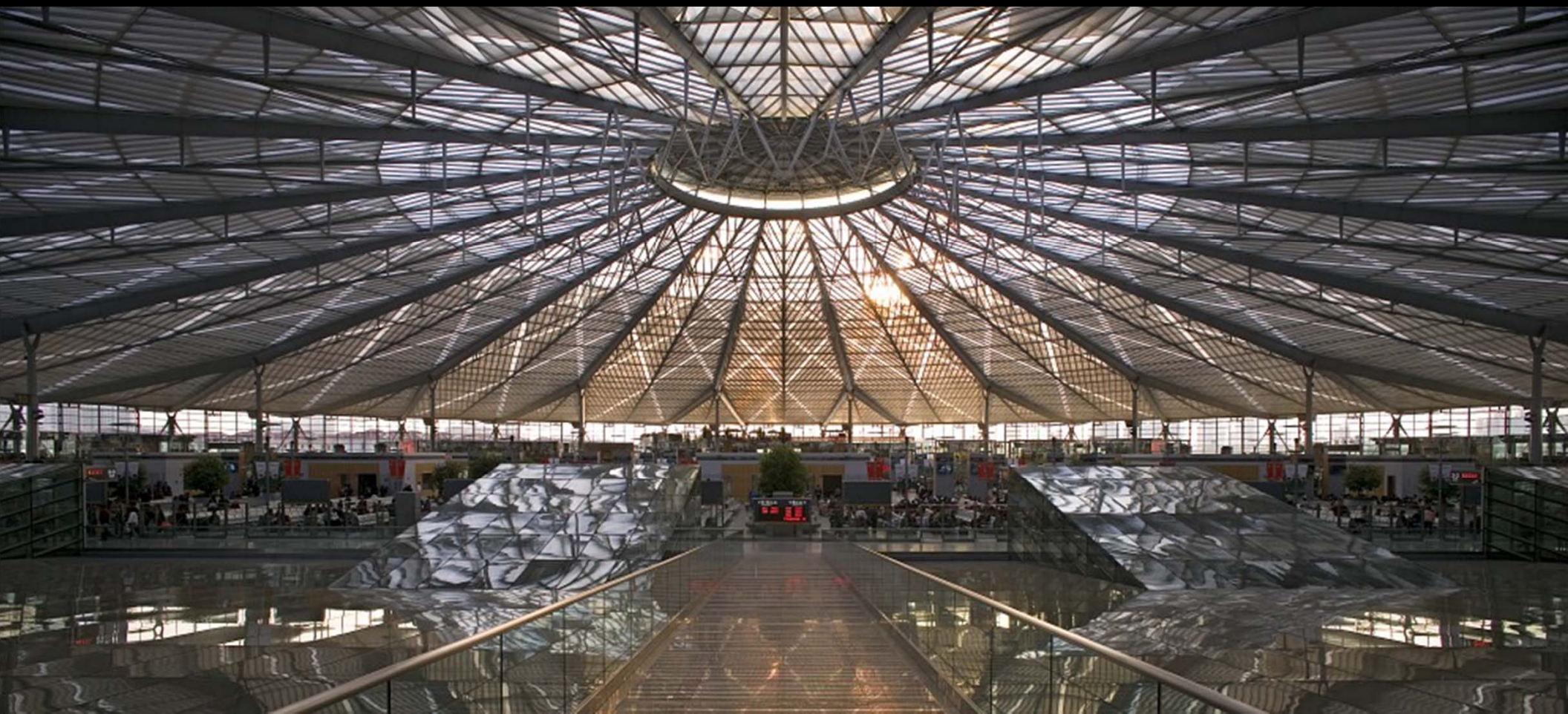
















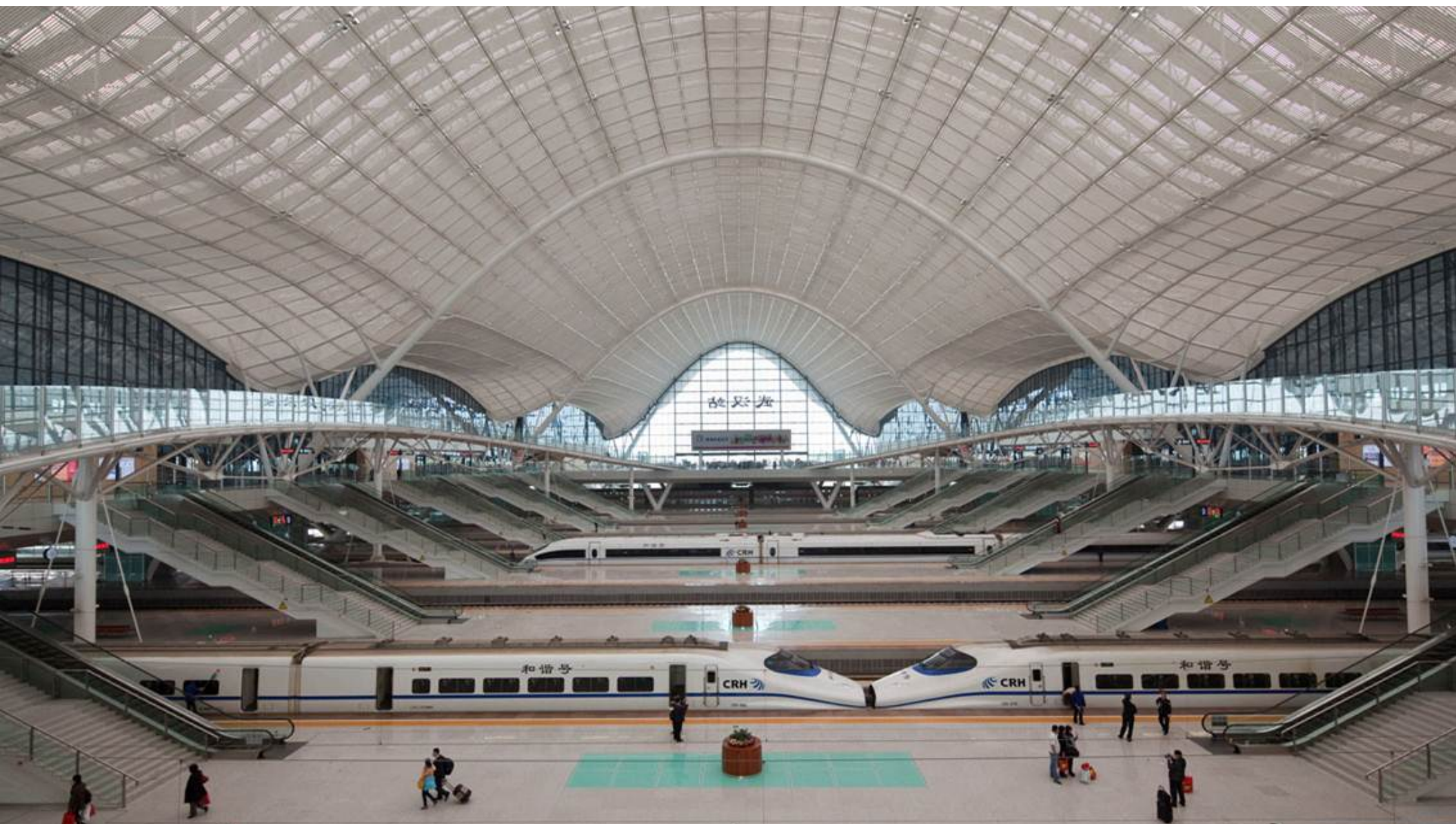
Wuhan Railway Station 2009

Wuhan, China









9. The Era of new Urban Transport















Millennials in Motion

Changing Travel Habits of Young Americans
and the Implications for Public Policy

U.S. PIRG
Education Fund
FRONTIER GROUP

Figure 1. Millennials' Day-to-Day Transportation Experience Differs from Other Generations⁷

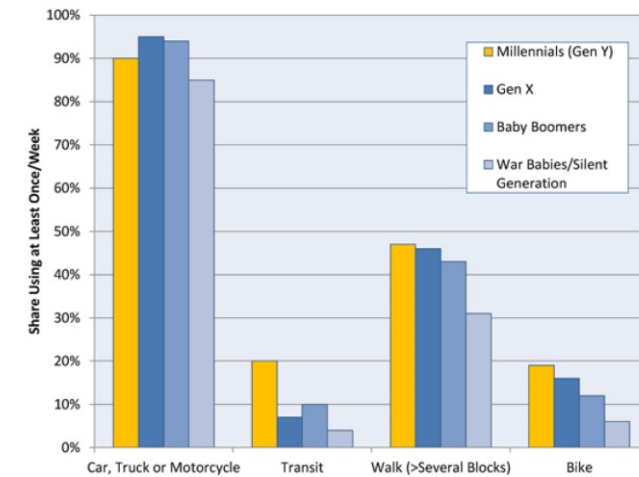
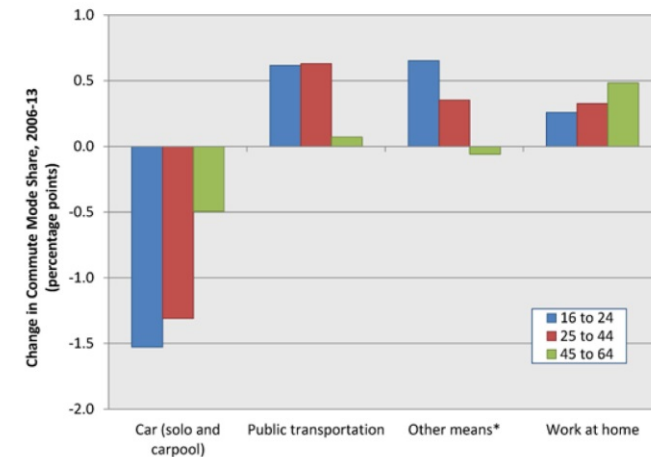


Figure 3. Change in Commute Mode Share, 2006 to 2013, by Age Group¹⁹



* "Other means" includes walking, taxicab, motorcycle, bicycle or other unspecified means.

10. Stations as All-
Encompassing Mobility Hubs
(The Rebirth of the Railway Station : Phase 2)

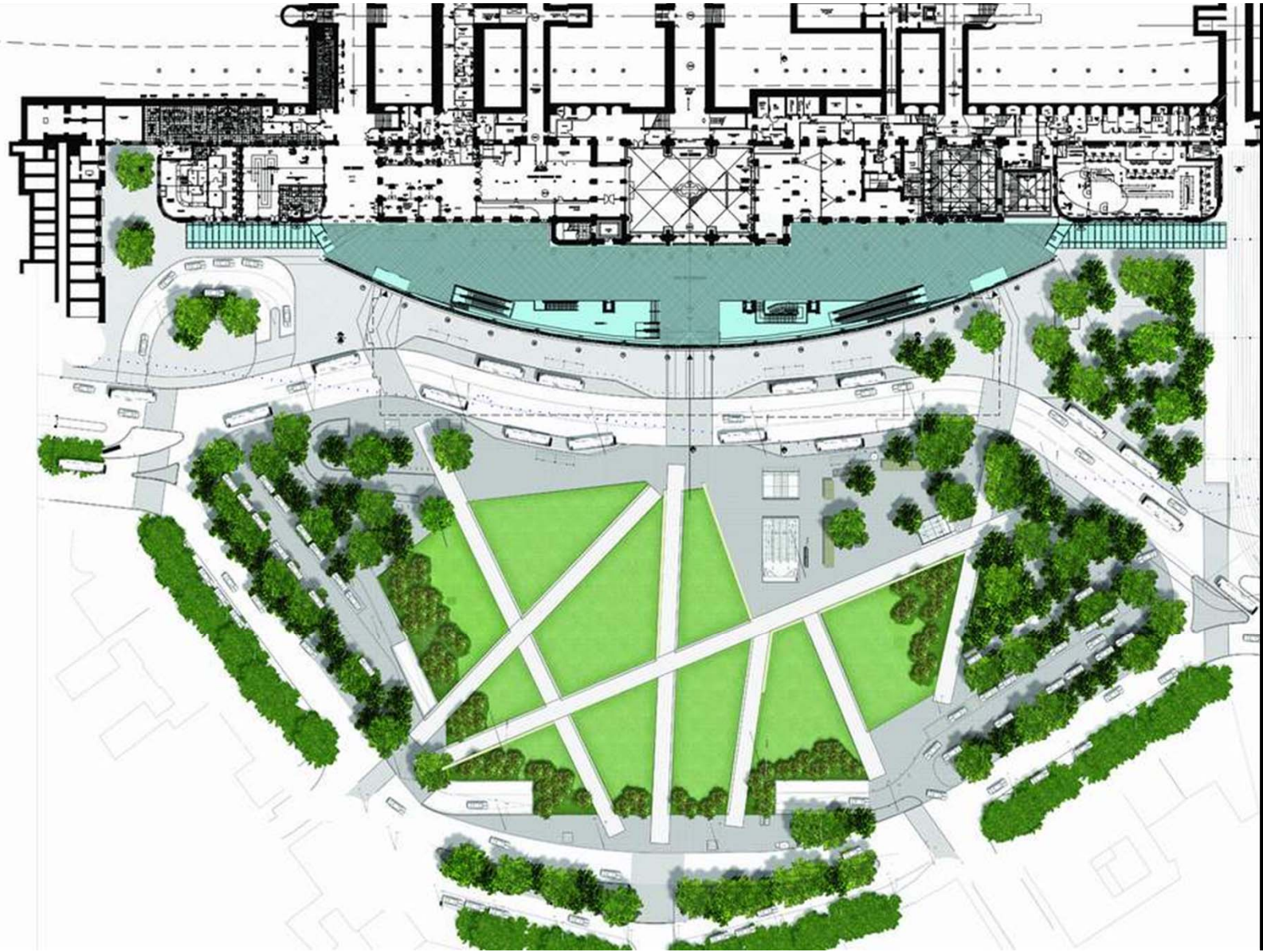
Strasbourg Station and Multimodal Hub 2007



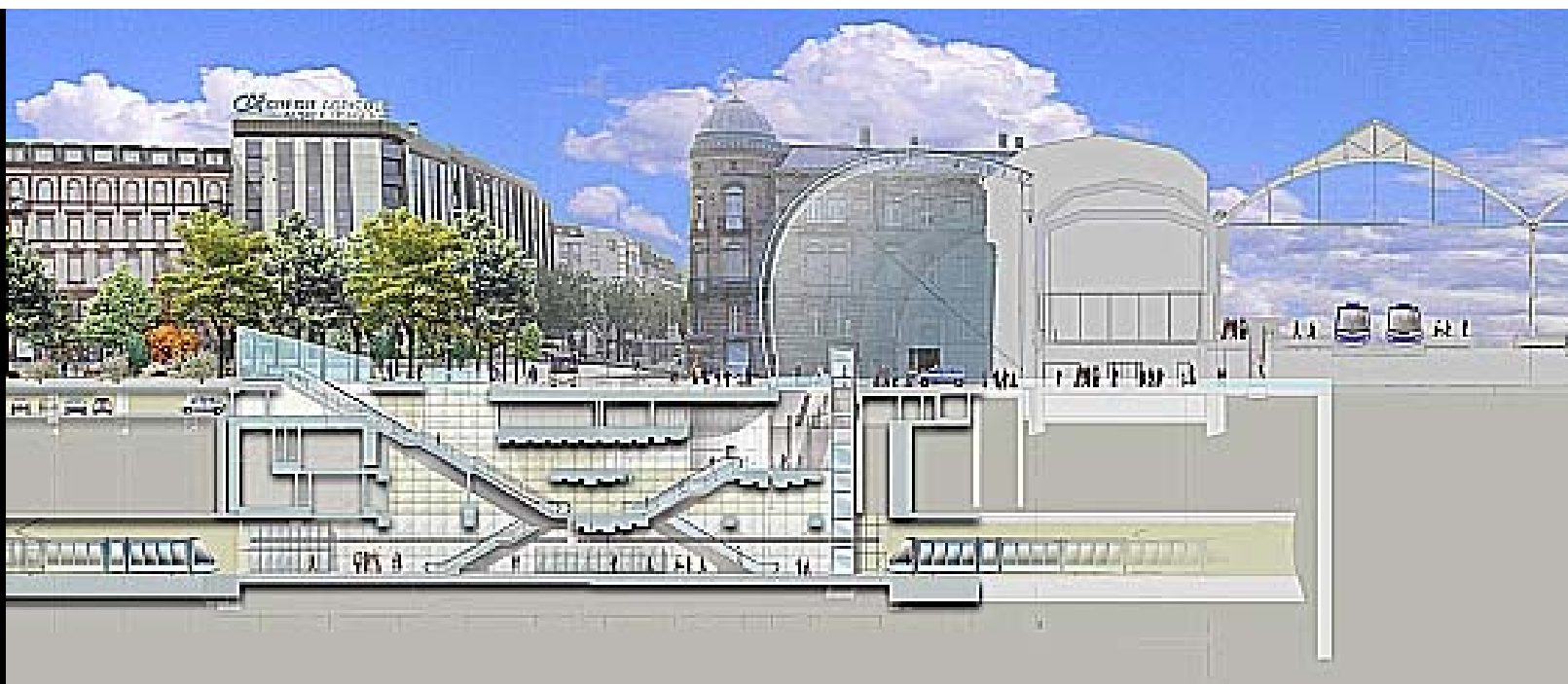












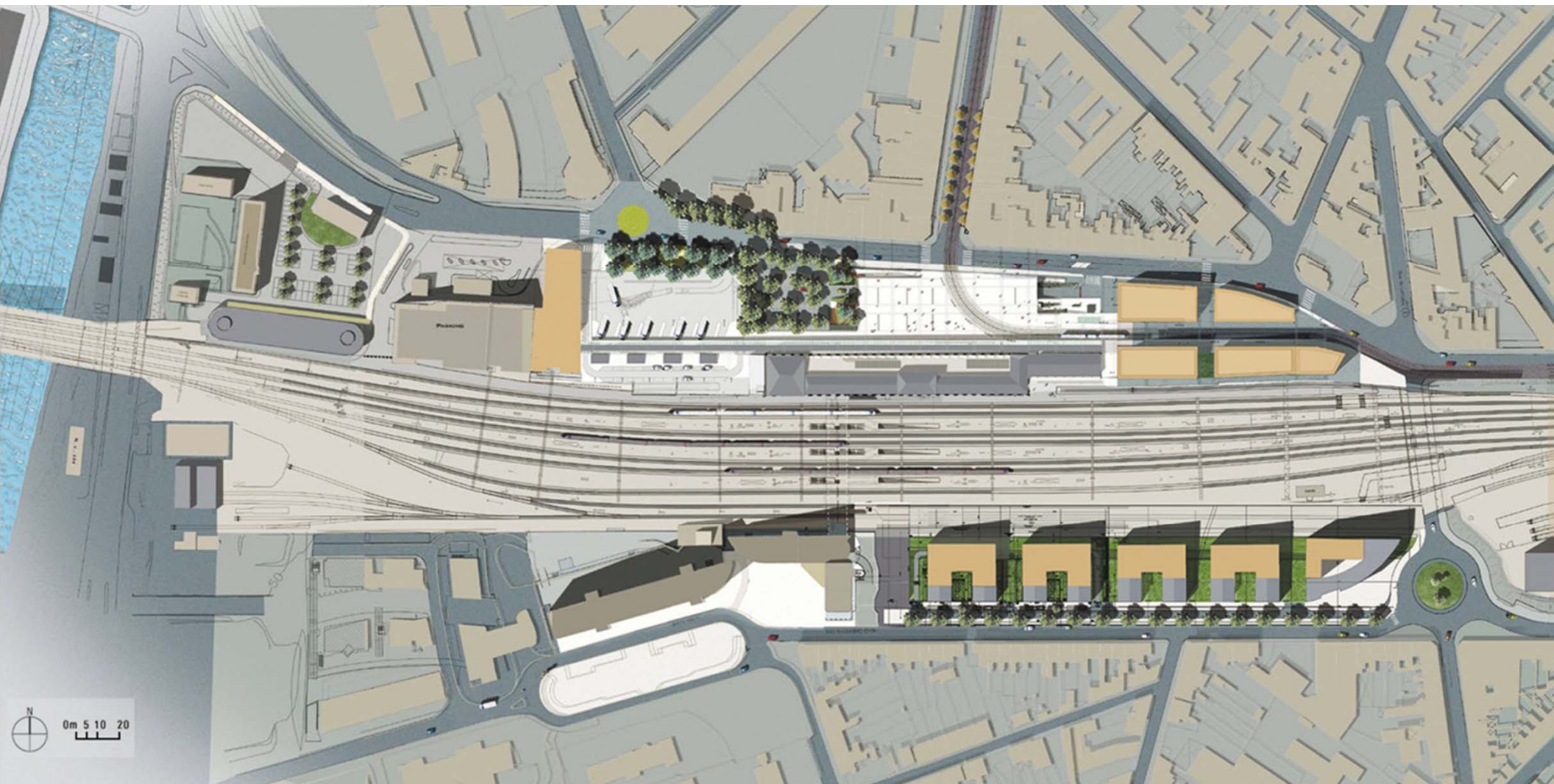
Strasbourg Railway Station
AREP photo





Le Mans Multimodal Hub 2006



















11. Stations as Urban Agoras

(The Rebirth of the Railway Station : Phase 3)

Marseille, Saint-Charles Multimodal Hub 2001

